

ECPC News welcomes submissions from all parks friends groups to [ecpc@newhavenct.net](mailto:ecpc@newhavenct.net) or ECPC News at the above address.

ECPC is supported in part by the New Haven Department of Parks, Recreation & Trees.



**ANDEAN EVENING TO BENEFIT BISHOP WOODS**

On April 20<sup>th</sup>, the Friends of Bishop Woods Bird Sanctuary held a fundraiser to benefit the park at Macchu Picchu Restaurant in Fair Haven. Through the generosity of the people who attended, we raised \$600 to further our efforts to protect Bishop Woods. The event, our first fund raiser, was successful for several reasons. The restaurant agreed to provide terrific food at a very reasonable price, and we in return, brought in a host of new diners to Macchu Picchu, people who otherwise would not have known about this little Peruvian gem. State Representative Robert Megna, a Macchu Picchu regular, generously covered the restaurant bill, enabling the Friends of Bishop Woods to collect all of the proceeds. Bob also donated a bird book written by Dr. Bishop, which we raffled off to increase our earnings. And most importantly, over 25 people cared enough to come and support the vision of the park's founder, that it "forever remain a bird sanctuary."

Many of these attendees signed up as new members of the Friends of Bishop Woods. By holding the benefit at a local restaurant, we have begun to involve the business community in our efforts to protect Bishop Woods. The restaurateur felt good about helping out his regular customers, and the successful evening helped out our cause - a win/win situation! For more information on Bishop Woods, to get on our mailing list, or to join the Friends of Bishop Woods Bird Sanctuary, contact Joy Sherman, President, at [joy@msmotorcars.com](mailto:joy@msmotorcars.com)



**A MESSAGE FROM THE PRESIDENT**

Hello faithful members,

I hope you are enjoying the great weather outside in New Haven's first class park system. Although we live in a city, New Haven residents are never that far away from the beauty of the natural world. We owe this to urban planners who had the foresight to set aside great tracts of public land so close to our urban center. In fact, there are some vistas in our fair city that are so stunning, they compare favorably to views in some national parks. I would like to list my five favorite vistas in the New Haven park system, in no particular order.



*The Prez & Co.*

**The View from the Green:** Framed by skyscrapers and the steeples of the three churches, the green is a dramatic example of a public space. Elm trees surround the perimeter, and the lawn on the lower green is the perfect place for a summer concert or festival. No theater is as beautiful as the Green on a summer night when only the steeples of the churches are visible rising above the trees. Greens are common in New England, but none are as impressive as ours.

**The View from the top of East Rock:** I can think of very few cities in North America where one can travel from the sea and climb up a hill as high as East Rock. The view from the top is one that every resident and visitor should experience. At the top one is rewarded with a panoramic view of all of New Haven. From this vantage point, it is striking just how beautiful our city is. I still cannot believe how many trees there are. From East Rock, New Haven resembles a vast forest with the occasional building popping up from the trees.

**The View toward West Rock on Route 1:** One day, while stuck at a traffic light on Route 1 in the searing heat, I casually turned my gaze to the left and at once I was transported to the countryside. There before me lay a picture perfect view of West Rock framed by the channel of the West River running through West River Park. All of a sudden I did not want the traffic to move. I was content to sit behind that light for as long as possible. This view of West Rock is even more impressive considering it is the last thing one would expect to see on the barren wasteland of Route 1.

**The View from the foot bridge over the Mill River:** I have an old postcard of this view of East Rock from 1908. Not much has changed over time. East Rock looks quite impressive reflected in the Mill River. From this spot it is easy to forget one is in a city.

**The View from the carousel at Lighthouse Point:** There is a reason ECPC has our two major events every year at Lighthouse Point Park. The views in every direction are simply stunning. One can look out toward the Sound and the Sperry Lighthouse, or over the harbor toward the New Haven skyline. From inside the carousel one can see a panoramic view of the Sound, the beach and the Five Mile Point Lighthouse. This park is another must for all visitors to and residents of New Haven.

There you have it. I am sure I missed some great spots and I would love hearing from any members about your favorite views or your favorite places in the New Haven park system. Until we meet again, get outside and enjoy your parks.

*Stephen Wilcox, President*  
 Elm City Parks Conservancy

**ECPC BOARD OF DIRECTORS**

- Steve Wilcox, *President* - Cordalie Benoit, *Vice President*
- Easter Howard, *Secretary* - Anna Schildroth, *Treasurer*
- Chris Ozyck, Dave Reher, Dave Demers, Michelle Maitland, Marge Ottenbreit, Colin Caplan, Kris Sainsbury,
- Paul Larivee, Barbara Schlein *Staff - Illisa Kelman*

**BOARD MEETINGS**

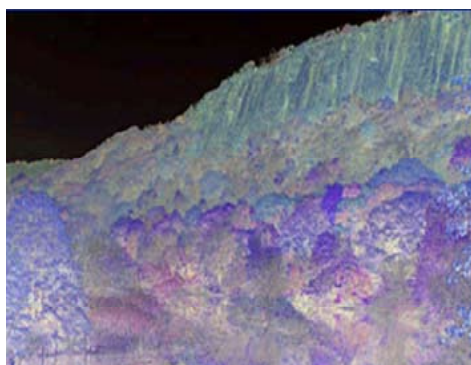
6-7:30 pm, 4th Wednesday of each month, New Haven Parks Offices  
 720 Edgewood Avenue. Open to the public.  
 Please call 946-5713 in case of scheduling changes.

**SAVE THE DATES- watch your inboxes and mail boxes!**

**Bay View Park Fence Raising: the Second Segment.** Come help the Friends of Bay View further conceal I95. **Saturday, June 25. 9AM.** **A Parks Presents event.**

*the ridge line of East Rock Park*

**ECPC Independence Day Picnic,** for members and friends only. At the Summit of East Rock Park. **Monday, July 4.** Watch the fireworks form towns up and down the coast! Bring a picnic! Bring the kids!



**CHECK ECPC'S WEBSITE FOR NEWS AND EVENTS**

<http://cityofnewhaven.com/parks/ecpc.htm>

- \* Keep posted on upcoming events and activities.
- \* Read old newsletters.
- \* Contact a Park Friends group. If your friends group has a point of contact, please let Illisa know: email [elmcityparksconservancy@yahoo.com](mailto:elmcityparksconservancy@yahoo.com), or call 946-5713.

**HAVE YOU TAKEN PHOTOS AT AN ECPC EVENT??**

If you have photographs from an ECPC or neighborhood park event Polar Plunge, Sip inot Spring, or our Fourth of July picnic, please send us a copy, through email or snail mail, along with the name of the photographer. We'll liven up the web site with your images.

Citizen-based and not-for-profit, **Elm City Parks Conservancy** is the only parks advocacy organization serving New Haven's parks system. Our mission is to partner with parks friends groups, parks users and New Haven's Dept. of Parks, Recreation & Trees to strengthen public awareness, participation and preservation of New Haven's beautiful and historic parks system.

## ECPC AND SCA: THE SUMMER INTERNS ARRIVE!

As this newsletter "goes to press", ECPC's newly hired Student Conservation Association (SCA) interns are moving into the West Rock Nature Center to begin their ten week summer job with ECPC.



Americorps alum, Lisa Beranek, grew up in Michigan, where she recently completed her BA in Natural Resource Management at Grand Valley State University. Outdoor educator, Lesley Pinoff, hails from the Chicago area and has just graduated from Cornell College in Iowa with a degree in religion and psychology.

One of New haven's newest green businesses, Dragon Oyster LLC, is setting up a suspended-bed oyster farm on the Quinnipiac River in Fair Haven. Half of the intern's time will be dedicated to working with Dragon. They will help develop an education and community outreach program about oysters and oystering in the Q, past and present. Leslie and Lisa will base their education and outreach efforts from Dover Beach Park, which lies next to Dragon's facility.

Leslie and Lisa will spend the other half of their time on both park enhancement and maintenance, and on ECPC-sponsored events. Edgerton and Edgewood Park Friends groups have already hired them to perform ground maintenance and trail work, but they still have hours available. If your park or neighborhood group would like some energetic help, contact Illisa at [elmcityparksconservancy@yahoo.com](mailto:elmcityparksconservancy@yahoo.com), or 946-5713 to work out a plan.  
*-Illisa Kelman*

## ATTENTION ALL PARKS FRIENDS AND NEIGHBORHOOD GROUPS

### DO YOU HAVE AN IDEA FOR A COMMUNITY EVENT IN YOUR LOCAL PARK?

Thanks to continuing support from the Community Foundation for Greater New Haven, ECPC is looking to aid your community park events through our

### EXPERIENCE YOUR PARKS! GRANTS

Make your idea a reality! Design a tour or event to showcase your local New Haven Park big or small ECPC can answer questions, offer added people power, or start-up funds. For more information or to receive an application contact ECPC or visit our web site at

<http://cityofnewhaven.com/parks/ecpc.htm#programs>.

The ECPC board meets monthly, and applications are accepted on a rolling basis.

## ORNAMENTAL ICONS: HELPING NEW HAVEN'S HERITAGE

ECPC continues our effort to bring attention to New Haven's historic public monument through sales of our Ornamental Icons. The City of New Haven and the Parks Department are systematically conserving each piece of sculpture, stone and bronze. In conjunction with this enormous undertaking, ECPC is selling these collectible ornaments to raise public awareness and appreciation of these features. Our initial ornament featuring the Five-Mile Point Lighthouse at Lighthouse Point Park is proving wildly popular!



We encourage you to participate in this campaign for sculpture while supporting ECPC's advocacy efforts. As a small gift or distinctive decoration, these ornaments are both attractive and affordable at **\$12 each or \$30 for 3. ECPC members receive discounted pricing of \$10 each or \$25 for 3.** To purchase your ornament, call, email or visit our web site: <http://cityofnewhaven.com/parks/ecpc.htm#programs>. Download an order form in "Public Art in the Parks".

## ANNUAL MEETING BRIEF

**YUMMY POTLUCK:** Featuring Easter Howard's bourbon-flavored barbecue chicken, Sharon Lovett-Graf's veggie lasagna, Micha Tanner's sushi, and Lori Hillson's apple crisp.

**STIMULATING PROGRAM:** Author, light-pollution activist and artist, Bob Crelin delivered a kid-friendly lecture, slide show and a reading from his book, "There Once Was a Sky Full of Stars." Bob offered some simple things everyone can do to mitigate light pollution and bring back the majesty of the night sky.

**AWESOME END OF EVENING:** Viewing Saturn and its rings, Jupiter and its moons, and our moon as they roved across the sky via Bob Crelin's telescope. I repeat: **AWESOME!**

*- Anna Schildroth*



*tasting wine at the carousel house (above); our fearless leader, Steve W. (below) - photo info: www.johnmcolumbus.com*

## SIP INTO SPRING 2005

On the crystal clear evening of May 12, ECPC celebrated spring with Sip into Spring 2005, our wine-tasting fund-raising extravaganza. Co-chairs Marge Ottenbreit and Anna Schildroth thank everyone who worked so hard to make this evening a fabulous success.



Over 225 people attended, enjoying the beautiful beach backdrop, delicious food by Funki Munki Caterers, wines of the world coordinated by Oddbins, art exhibit curated by Amanda Martin, and a silent auction of dozens of items and gift certificates. Thanks to the generosity of the auction donors and New

England Linen; the sponsorship of New Alliance Bank, the Regional Water Authority, and the New Haven Parks Department; the desserts from Atticus, Petonito's and the volunteer bakers; and the continuing partnership of Artspot!, the happy hour with a twist.

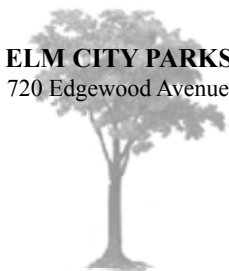
Special thanks to Chris Ozyck of Alfresco Landscaping for decorating the pavilion with blooming plants and trees. In a scant hour, Chris transformed the already lovely Carousel House into a floral wonderland, further enhanced by the light of a spectacular sunset. A staff writer from Connecticut Magazine was pleased enough with the look and feel of Sip to offer to write a feature on Sip 2006.

Finally, thanks to the ECPC board members and all of our wonderful volunteers for securing the 40 plus donations for our silent auction, for setting up and taking down, for greeting the wine distributors and the caterer, and for working the door. And a special thanks to our ECPC staff, Illisa Kelman, for her tireless efforts and creativity in producing the fliers, tickets and programs.

Sip left all involved tired and happy. *Marge Ottenbreit*

## ELM CITY PARKS CONSERVANCY

720 Edgewood Avenue, New Haven, CT 06515



## ECPC NEWS: SUMMER '05

*Please Open Immediately*

*Dated Material Enclosed*