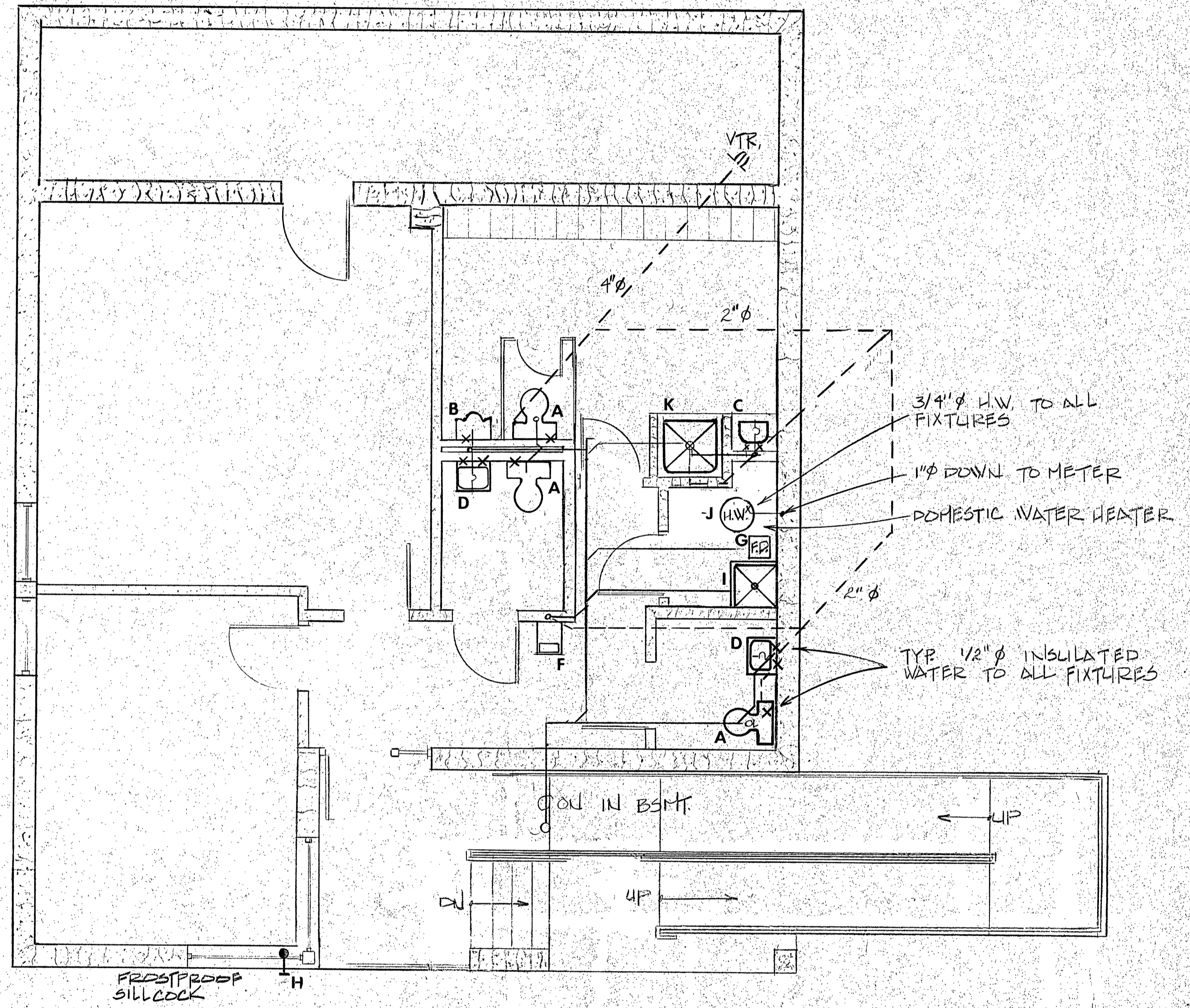


1 LOWER LEVEL PLUMBING PLAN
P101 SCALE: 1/4" = 1'-0"

MARK	FIXTURE	MANUFACTURER	TYPE	REMARKS
A	WATER CLOSET	American Std. Eljer Universal Run Kohler	210.700	Close coupled tank type, white, CP brass trap, elongated bowl, vitreous china, w/stop, & open front olsonite saniguard seat.
B	URINAL	American Std. Eljer Universal Run Kohler	6540.017	Wall hung, vitreous china, wall hangers, Sloan royal 1186 - 11 flush valve, adjust valve for site specific water pressure.
C	LAVORATORY	American Std. Eljer Universal Run Kohler	0476.028	Vitreous china, countertop lav, CP supplies with stops, P trap, 20" x 17", 4" centers, Symon # 8-10-0-H slow close push button
D	LAVORATORY	American Std. Eljer Universal Run Kohler	0195.289	Vitreous china wall hung w/arms concealed in wall, 24" x 20" CP supplies with stops, P trap and Symons 560-C-H slow close push button
E	SERVICE SINK	American Std. Eljer Universal Run Kohler	7695.018	24" x 20" acid resist enameled CI 3" trap, S.S. rim guard, faucet w/pail hook, hose end, vacuum breaker and integral stops.
F	ELECTRIC WATER COOLER	Halsey Taylor Westinghouse Eljer Sunroc	HT-ER	Stainless steel, barrier free 1/2 hp, 120 volts, fully recess, 19" project, 19 3/4" wide, 8 GPH at 50 deg F, 12" recess.
G	FLOOR DRAIN	Josam Smith Zurn Wade	30005-1	Cast iron body, square polished nikaloy strainer, caulk outlet, install with trap primer to be piped to local domestic water.
H	FROSTPROOF SILLCOCK	Josam Woodford Smith	71550-81	Cast brass, nikaloy face, key operated, vacuum breaker, 12" long to fit into partitions.
I	FLOOR SINK	Mustee	64P	Formed polyester resin concrete 24"x24"x10", 2" PVC drain assembly. #63. 600 A.C.P. trim
J	DOMESTIC WATER HEATER	Bradford White	F1-707E30	70 Gallon 26" dia. 7" Dia. Floe to roof
K	SHOWER STALL, RECEPTOR, TRIM	Aquarius miraplex Bradley Terra Base Synoda Mix Valve, Pressure Bourm type		



2 UPPER LEVEL PLUMBING PLAN
P101 SCALE: 1/4" = 1'-0"

GENERAL NOTES:

- THESE DRAWINGS ARE DIAGRAMMATIC ONLY. EXACT LOCATION OF ALL OUTLETS, SWITCHES, FIXTURES, ETC., MUST BE TAKEN FROM FINAL DETAILED ARCHITECTURAL DRAWINGS.
- ALL JUNCTION BOXES INDICATED AND/OR REQUIRED SHALL BE SIZED TO ACCOMMODATE INCOMING AND OUTGOING FEEDERS.
- HOMERUNS EXCEEDING 100' FROM SOURCE OF SUPPLY SHALL BE A MINIMUM OF #10 AWG-COPPER-3/4" C., UNLESS OTHERWISE INDICATED.
- ALL WIRING FOR FIRE ALARM SYSTEM SHALL BE INSTALLED IN A 3/4" C., UNLESS OTHERWISE INDICATED.
- THE ELECTRICAL CONTRACTOR MUST VERIFY CEILING FINISH CONSTRUCTION WITH FINAL ARCHITECTURAL DRAWINGS PRIOR TO ORDERING FIXTURES AND ORDER FIXTURES WITH PROPER MOUNTING ARRANGEMENTS TO BE COMPATIBLE WITH TYPE OF CEILING IN WHICH FIXTURE IS TO BE MOUNTED.
- PROVIDE 2 - 1" C. EMPTY UP INTO ACCESSIBLE CEILING SPACE FROM EACH PANEL FOR FUTURE WIRING.
- SHOCK ABSORBERS INSTALLED ON HOT & COLD FEEDS AT EACH FIXTURE GROUP.
- HANDICAPPED WATER CLOSETS TO HAVE RAISED SEATS, LAVATORIES TO HAVE TRAPS AND STOPS INSULATED BELOW, AS REQUIRED. (TRAPS TIGHT TO WALLS)