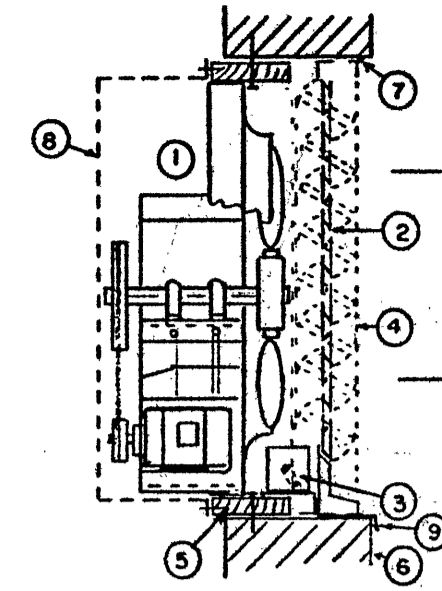


- 1 PROPELLER TYPE FAN WITH BELT DRIVE
- 2 INSULATED LOUVER (DAMPER)
- 3 LOUVER MOTOR OPERATOR
- 4 PVC-COATED GALVANIZED IRON SCREEN
- 5 TREATED WOOD BLOCKING (ANCHORED TO WALL)
- 6 OUTSIDE WALL
- 7 CAULKING AROUND ALL SIDES OF LOUVERS WITH SILICONE
- 8 WOVEN WIRE PROTECTIVE GUARD WITH ACCESS TO MOTOR AND DAMPER MOTOR
- 9 DRIP LIP TO CARRY WATER AWAY FROM WALL



2 PROPELLER TYPE WALL FAN
M1 U.F.S.

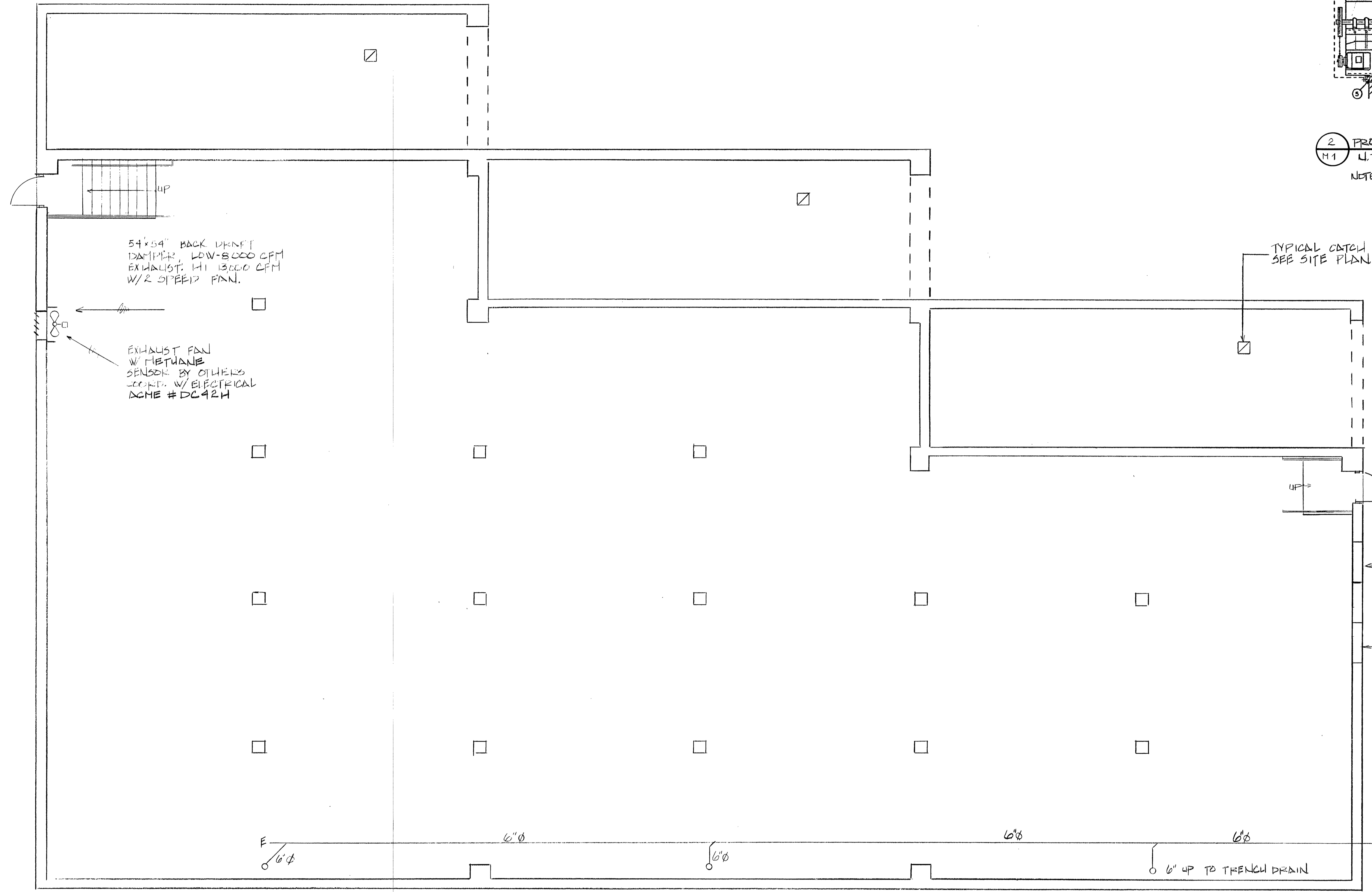
NOTE: SIMILAR DETAIL FOR BOTH LOWER LEVEL & TIPPING FLOOR FANS.

TYPICAL CATCH BASIN
SEE SITE PLAN

1x4 LOUVER
BY CARNIES #L24

3/8" @ 10' @ SEE SITE
C.D. @ GRADE

⊗ TYPICAL YARD HYDRANT
SEE SITE. COORD W/
SITE CONTRACTOR.



54x54" BACK DRAFT
DAMPER, LOW-8000 CFM
EXHAUST. HI 13000 CFM
W/R SPEED FAN.

EXHAUST FAN
W/ METHANE
SENSOR BY OTHERS
COORD. W/ ELECTRICAL
ACME # DC42H

1 MECHANICAL PLAN
M1 SCALE: 3/16" = 1'-0"

NOTE: FOR EXHAUST FAN
LOCATIONS ABOVE
TIPPING FLOOR, SEE:
1/4, 1/2.

Drawn by: SKB Checked by: CKS
Date: JULY 2, 1990
Revisions: