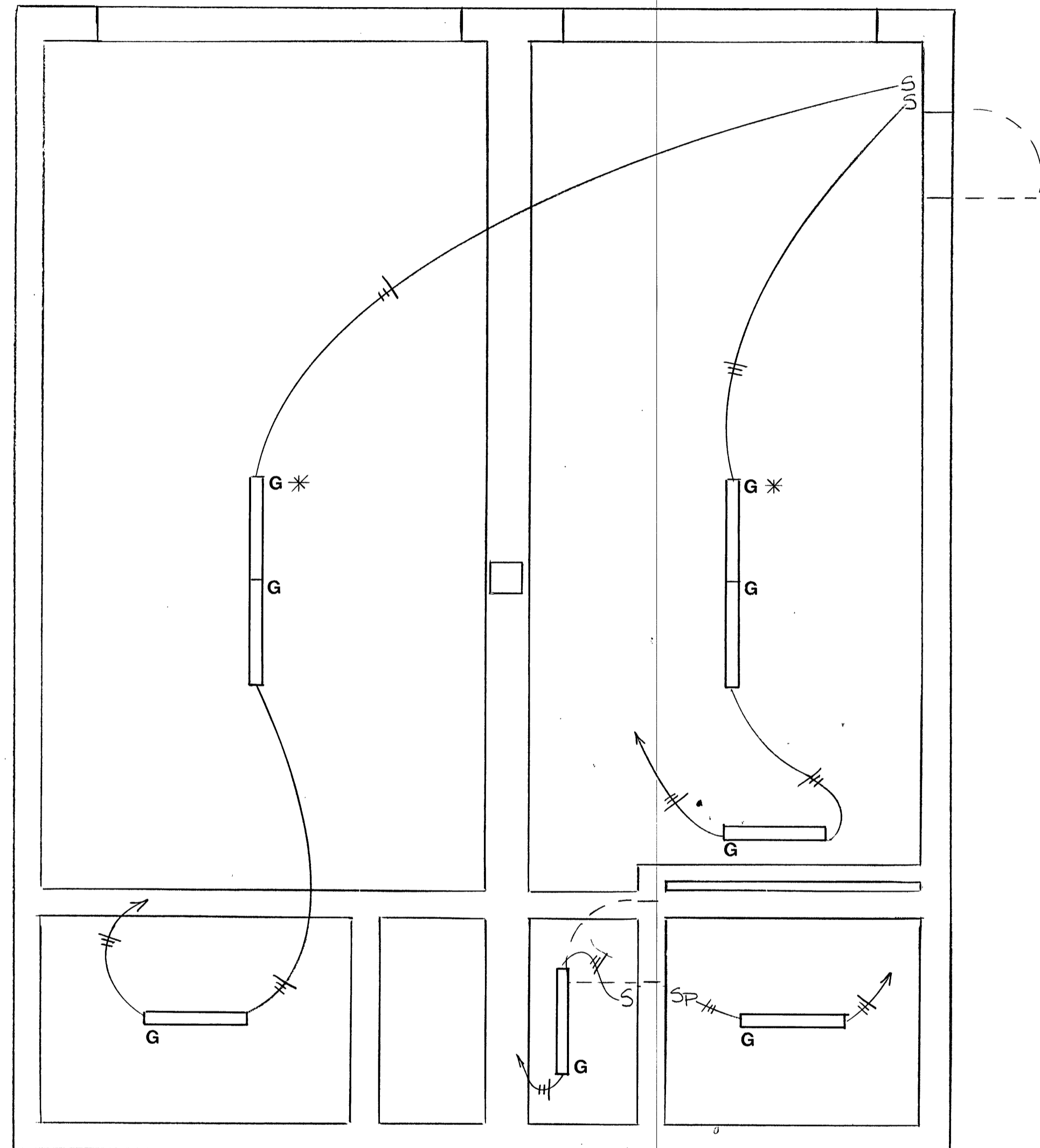


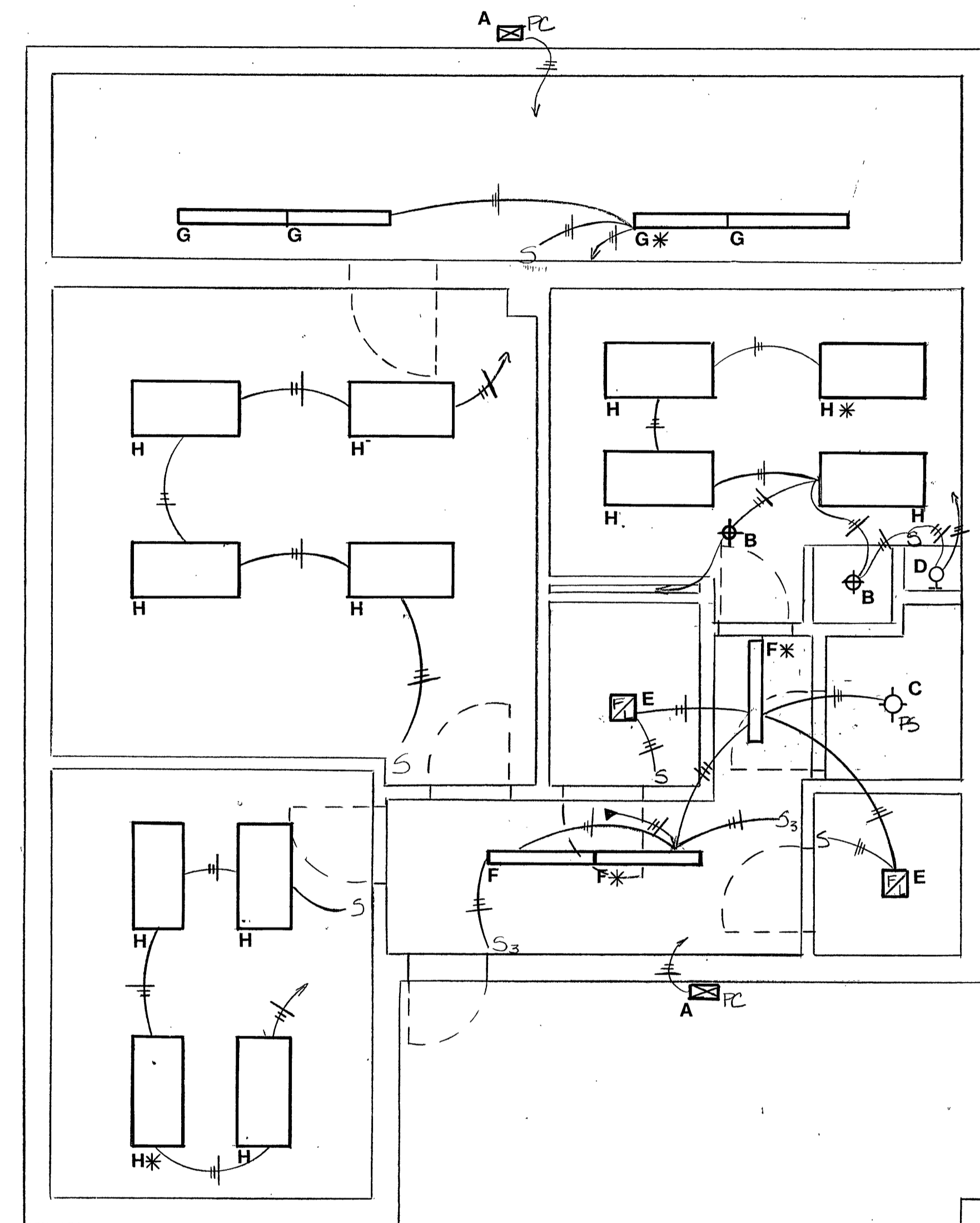
Drawn by: SKB
Checked by: EKS
Date: JULY 2, 1990
Revisions:

E101

1115-09-B



1 LOWER LEVEL LIGHTING PLAN
E101 SCALE: 1/4" = 1'-0"



2 UPPER LEVEL LIGHTING PLAN
E101 SCALE: 1/4" = 1'-0"

- GENERAL NOTES:
1. THESE DRAWINGS ARE DIAGRAMMATIC ONLY. EXACT LOCATION OF ALL OUTLETS, SWITCHES, FIXTURES, ETC., MUST BE TAKEN FROM FINAL DETAILED ARCHITECTURAL DRAWINGS.
 2. ALL JUNCTION BOXES INDICATED AND/OR REQUIRED SHALL BE SIZED TO ACCOMMODATE INCOMING AND OUTGOING FEEDERS.
 3. HOMERUNS EXCEEDING 100' FROM SOURCE OF SUPPLY SHALL BE A MINIMUM OF #10 AWG-COPPER-3/4" C., UNLESS OTHERWISE INDICATED.
 4. ALL WIRING FOR FIRE ALARM SYSTEM SHALL BE INSTALLED IN A 3/4" C., UNLESS OTHERWISE INDICATED.
 5. THE ELECTRICAL CONTRACTOR MUST VERIFY CEILING FINISH CONSTRUCTION WITH FINAL ARCHITECTURAL DRAWINGS PRIOR TO ORDERING FIXTURES AND ORDER FIXTURES WITH PROPER MOUNTING ARRANGEMENTS TO BE COMPATIBLE WITH TYPE OF CEILING IN WHICH FIXTURE IS TO BE MOUNTED.
 6. PROVIDE 2 - 1" C. EMPTY UP INTO ACCESSIBLE CEILING SPACE FROM EACH PANEL FOR FUTURE WIRING.

*-ELS INDICATES EMERGENCY BALANCE

LEGEND

- A EXT LIGHT PHOTO ELECTRIC CONTROL SWITCH SENSOR - SYLVANIA # AK3P-250 HPS-120 H
- B MOTION DETECTOR, SENSOR SWITCH - CM-000 CEILING UNIT - WS-120 WALL SWITCH
- C PULL SWITCH
- D WALL MOUNT LIGHT FIXTURE - PROGRESS - P7370 - 12" ROUND W/34 WATT LAMP # R21092W
- E FAN/LIGHT - BROWN # 095 WITH 4" Ø DUCT TO BLDG. EXTERIOR.
- F 1'x4'-0" LIGHT FIXTURE, RECESSED CRESCENT-W4240-DLA-DCT-SEC (+ELS)
- G 6" x 8'-0" LIGHT FIXTURE SURFACE MOUNT CRESCENT-RN 240-DCT-SEC (+ELS)
- H 2'-0" x 4'-0" LIGHT FIXTURE, RECESSED CRESCENT-2+4P440 A12-DCT-SEC (+ELS)