

TRAFFIC AUTHORITY AGENDA  
DECEMBER, 2010

Representatives of the Department of Traffic and Parking will present the following items to the Traffic Authority of the City of New Haven on December 14, 2010.

Item 1. Appeal of the Traffic Authority denials of item 2C-2., the request to rescind SUS STOP regulation on the west side of Alden Avenue, inbound, opposite Burton Street and Item 2C-3., the request to rescind BUS STOP regulation on the east side of Alden Avenue, outbound, near side of Burton Street.

Item 2. Appeal of the Traffic Authority denial of Item 2D-1., the request to establish METERED LOADING ZONE regulation on the north side of Crown Street, from approximately 35 feet east of Temple Street to approximately 75 feet east of Temple Street.

Item 3. Request of the Department of Transportation, Traffic and Parking for parking controls less than one block in length as indicated.

A. Establish RESERVED FOR HANDICAPPED parking spaces.

1. In front of 80 Bristol Street 1 space
2. In front of 56 Perkins Street 2 spaces
3. In front of 47 Truman Street 1 space

B. Rescind RESERVED FOR HANDICAPPED parking space.

1. In front of 72 Hazel Street 1 space

C. Rescind BUS STOP regulation.

1. On the south side of Chapel Street, outbound, near side of Church Street. Request of CTTransit.

Approval of A through C. recommended.

Item 4. Request for rescinding 30 MINUTE PARKING and for establishing TWO HOUR METER/VOUCHER PARKING, 8AM – 7PM, MONDAY – SATURDAY regulation of the south side of Chapel Street from Church Street to Orange Street.

Respectfully submitted,



Michael J. Piscitelli, AICP  
Traffic Engineer

MEMORANDUM

TO: Board of Police Commissioners  
FROM: Michael Piscitelli, Traffic Engineer  
RE: Appeal of the Traffic Authority denials of Item 2C-2., the request to rescind BUS STOP regulation on the west side of Alden Avenue, inbound, opposite Burton Street and Item 2C-3., the request to rescind BUS STOP regulation on the east side of Alden Avenue, outbound, near side of Burton Street.

It is recommended the appeal to reverse the Traffic Authority denials of Item 2C-2., the request to rescind BUS STOP regulation on the west side of Alden Avenue, inbound, opposite Burton Street and Item 2C-3., the request to rescind BUS STOP regulation on the east side of Alden Avenue, outbound, near side of Burton Street be granted

The residents have requested this change as the availability of curbside parking for residents is limited and bus stops are closely spaced and abundant along Alden Avenue.

Alden Avenue is a local collector distributor type roadway which operates with two way traffic. One travel lane in each direction is provided. Unregulated parking is generally permitted on both sides of the street.


Alden Avenue is served by the CT Transit "Q" route. Existing bus stops are as follows:

STREET	AT (LOCATION)	SIDE	DIR.	LOC.	LGTH	RTE	SER
ALDEN AVE	WOODBIDGE ST	E	OB	OPP. INTER.	80	Q	CT TR
	WEST ELM ST	E	OB	NEAR SIDE	80	Q	CT TR
	BURTON ST	E	OB	NEAR SIDE	80	Q	CT TR
	WILLARD ST	E	OB	NEAR SIDE	80	Q	CT TR
	FOUNTAIN ST	E	OB	NEAR SIDE	80	Q	CT TR
ALDEN AVE	FOUNTAIN ST	W	IB	FAR SIDE	140	Q	CT TR
	WILLARD ST	W	IB	NEAR SIDE	80	Q	CT TR
	BURTON ST	W	IB	OPP. INTER.	80	Q	CT TR
	WEST ELM ST	W	IB	NEAR SIDE	80	Q	CT TR
	WOODBIDGE ST	W	IB	NEAR SIDE	80	Q	CT TR
	EDGEWOOD AVE	W	IB	NEAR SIDE	80	Q	CT TR

Elimination of the bus stops at Burton Street would result in approximately an additional 280 to 320 foot walk to the nearest adjacent bus stop and would create an additional six on-street parking spaces..

In view of the above, the appeal to reverse the denials of Item 2C-2., the request to rescind BUS STOP regulation on the west side of Alden Avenue, inbound, opposite Burton Street and Item 2C-3., the request to rescind BUS STOP regulation on the east side of Alden Avenue, outbound, near side of Burton Street is deemed warranted and approval is recommended.

Respectfully submitted,

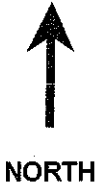
  
Michael J. Piscitelli, AICP  
Traffic Engineer

# Department of Transportation, Traffic and Parking

200 Orange Street, New Haven, Connecticut 06510

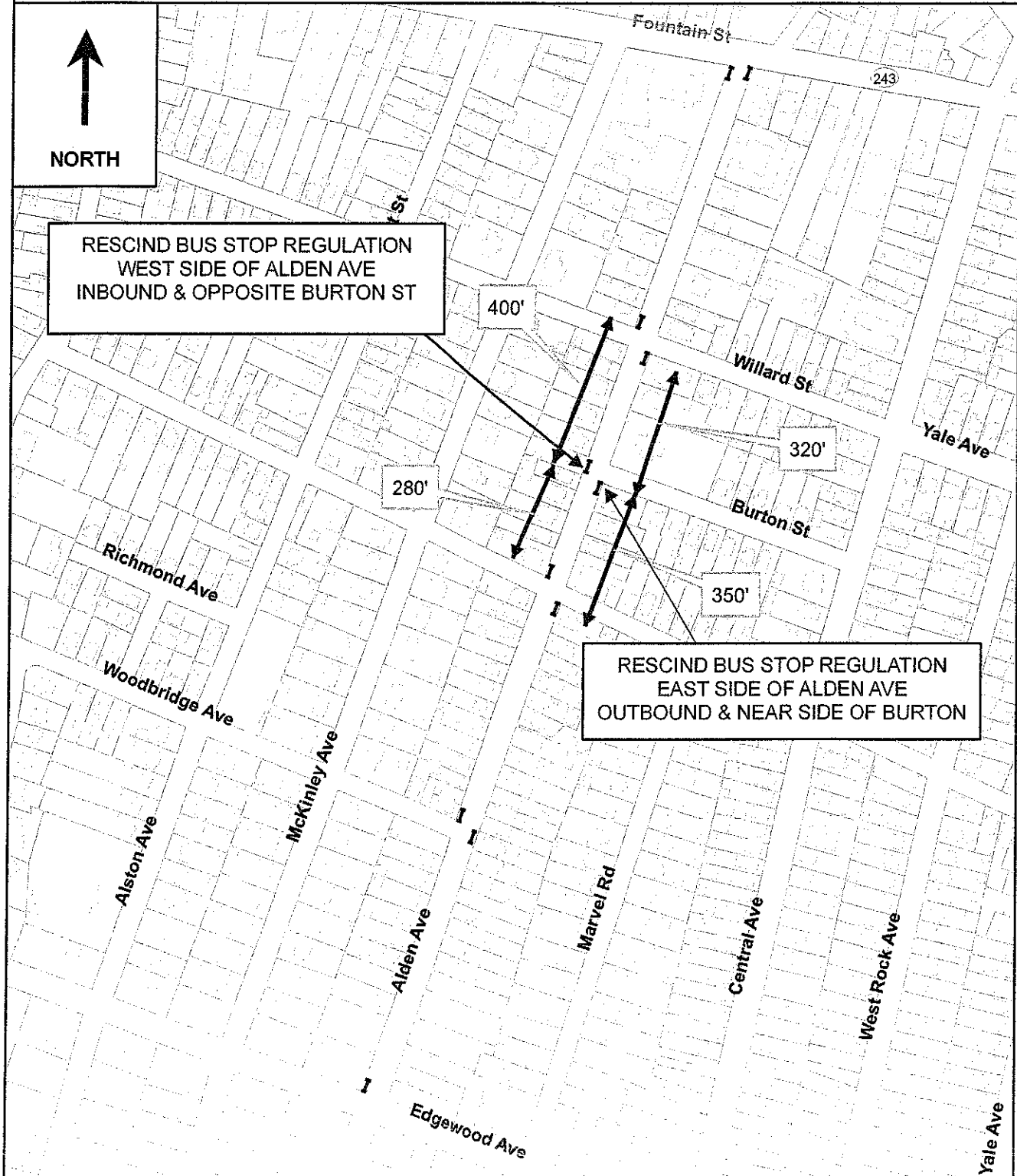
**LOCATION:** ALDEN ST, EDGEWOOD TO FOUNTAIN  
**SUBJECT:** TRAFFIC AUTHORITY

**ITEM #** 1  
**DATE:** DECEMBER 14TH, 2010

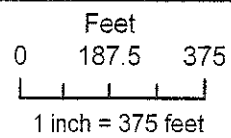


RESCIND BUS STOP REGULATION  
WEST SIDE OF ALDEN AVE  
INBOUND & OPPOSITE BURTON ST

RESCIND BUS STOP REGULATION  
EAST SIDE OF ALDEN AVE  
OUTBOUND & NEAR SIDE OF BURTON



**Legend**  
I Bus Stops



**ATTENTION: DISCLAIMER**

This map is intended for illustrative and Community-Based Planning processes. Every reasonable effort has been made to assure the accuracy of the map and data provided; nevertheless, some information may not be accurate. The City of New Haven assumes no responsibility arising from the use of this information.  
No warranty is made by the City of New Haven as to the accuracy, reliability or completeness of these data for individual or aggregate use with other data. Original data compiled from various sources. Spatial information may not meet national map accuracy standards. This information may be updated without notification.

ITEM # 2  
DATE: December 14th, 2010

MEMORANDUM

TO: Board of Police Commissioners  
FROM: Michael Piscitelli, Traffic Engineer  
RE: Appeal of the Traffic Authority denial of Item 2D-1., the request to establish METERED LOADING ZONE regulation on the north side of Crown Street, from approximately 35 feet east of Temple Street to approximately 75 feet east of Temple Street.

---

It is recommended the appeal to reverse the Traffic Authority denial of Item 2D-1., the request to establish METERED LOADING ZONE regulation on the north side of Crown Street, from approximately 35 feet east of Temple Street to approximately 75 feet of Temple Street be granted.

The applicants have requested this change to facilitate deliveries to commercial entities in the immediate area.

Crown Street is a collector distributor type roadway which operates with ONE WAY westbound traffic. Two travel lanes are provided. Thirty minute time limited parking is permitted on the north side of the street and NO PARKING is permitted on the south side of the street.

Provision of a commercial loading zone at the location would reduce the incidence of vehicles obstructing a travel lane while making deliveries. Delivery vehicles stopped in travel lanes cause motorists to make unexpected weaving maneuvers. A loading zone will allow for safer delivery activity. The loading zone curb area would be metered.

In view of the above, the appeal to reverse the denials of Item 2D-1., the request to establish METERED LOADING ZONE regulation on the north side of Crown Street, from approximately 35 feet east of Temple Street to approximately 75 feet of Temple Street is deemed warranted and approval is recommended.

Respectfully submitted,



Michael J. Piscitelli, AICP  
Traffic Engineer

MP/bf

Request of: Rena Leddy, Town Green District

# Department of Transportation, Traffic and Parking

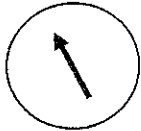
200 ORANGE STREET, NEW HAVEN, CONNECTICUT 06510

LOCATION: CROWN ST.

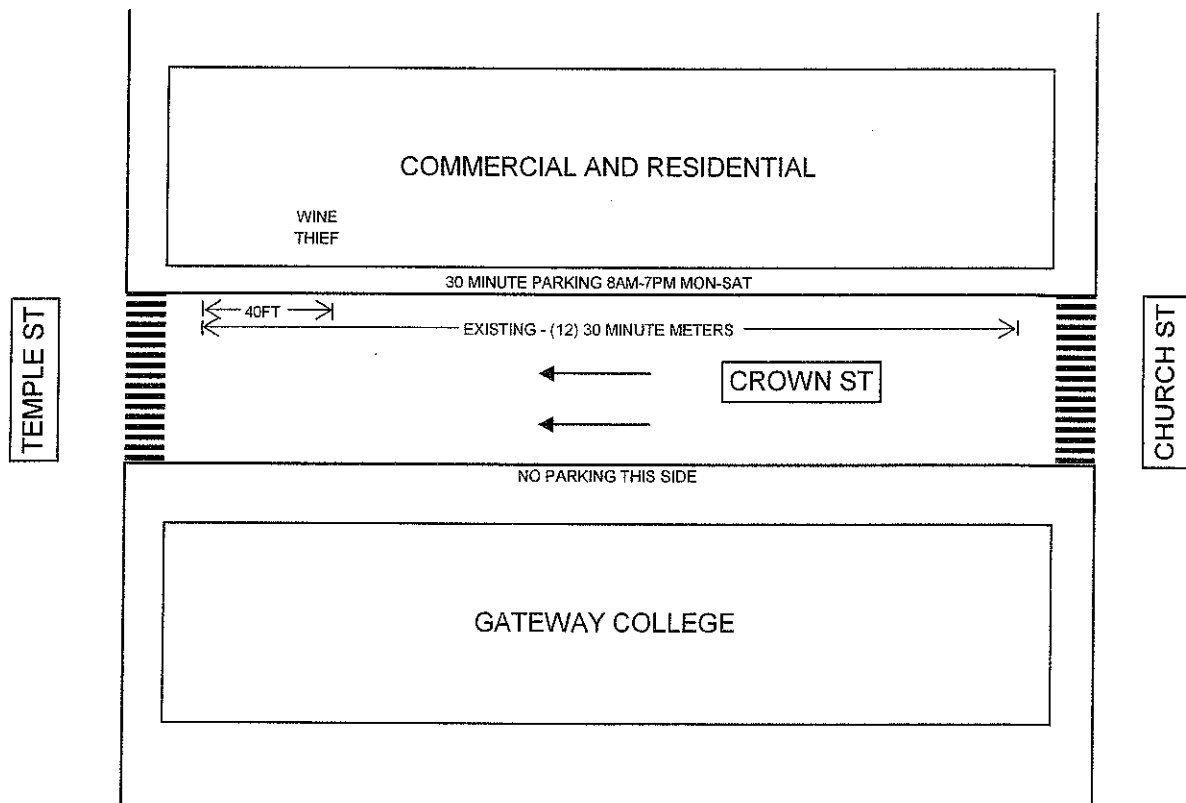
ITEM # 2

SUBJECT: PARKING CONTROL

DATE: JANUARY 14th, 2010



NORTH



ITEM # 3  
DATE: December 14th, 2010

MEMORANDUM

TO: Board of Police Commissioners  
FROM: Michael Piscitelli, Traffic Engineer  
RE: Request for parking controls less than one block in length as indicated.

It is recommended the request for parking control in areas less than one block in length as indicated below be approved.

A. Establish RESERVED FOR HANDICAPPED parking spaces.

1. In front of 80 Bristol Street..... 1 space
2. In front of 56 Perkins Street..... 2 spaces
3. In front of 47 Truman Street..... 1 space

B. Rescind RESERVED FOR HANDICAPPED parking space.

1. In front of 72 Hazel Street..... 1 space

C. Rescind BUS STOP regulation.

1. On the south side of Chapel Street, outbound, near side of Church Street. Request of CT Transit.

Approval of A through C. recommended.

Respectfully submitted,



Michael J. Piscitelli, AICP  
Traffic Engineer

MP/bf

ITEM #4  
DATE: December 14, 2010

MEMORANDUM

TO: Board of Police Commissioners  
FROM: Michael J. Piscitelli, AICP, Traffic Engineer  
RE: Request for rescinding 30 MINUTE PARKING and for establishing TWO HOUR METER/VOUCHER PARKING, 8AM - 7PM, MONDAY - SATURDAY regulation of the south side of Chapel Street from Church Street to Orange Street.

---

It is recommended to modify the metered parking limit from 30 minutes to 2 hours for the parking meters on Chapel Street, from Church Street to Orange Street. This action is at the request of the area merchants. The Town Green Special Services District surveyed all area business owners/managers and the vast majority is in favor of this change. Additionally, this change will create consistency with the time limit established on the meters along Chapel Street within the neighboring blocks.

Respectfully submitted,



Michael J. Piscitelli, AICP  
Traffic Engineer

MP  
Request of: Department of Transportation, Traffic and Parking