

New Haven Health Department 2009 Annual Report

John DeStefano, Jr.
Mayor

Chisara N. Asomugha, MD, MSPH, FAAP
(Acting) Director of Health



Ensuring the health of all New Haven residents...

The New Haven Health Department Mission:

To
advocate
for and
ensure
the
health
and well-being of all
New Haven
residents.



Table of Contents

Mission Statement	Inside front cover
Table of Contents	1
Letter from Mayor DeStefano, Jr.	2
Letter from the New Haven Health Director	3
Administrative Services	4
AIDS Services	7
Breath Easy: Combating Asthma in New Haven	10
Consumer Protection	13
Environmental Health	14
Health Education	22
Laboratory	24
Maternal and Child Health	26
Emergency Preparedness	29
Preventive Medicine	31
Public Health Nursing	36
Vital Statistics	41
Towards Health Equity: Envisioning a Healthy City	42
New Haven Health Department Organizational Chart	44
Health Department Divisions / Bureaus	45
Appendix A – New Haven Asthma Initiative	47
Appendix B – Maternal & Child Health Programs	49
New Haven Board of Health Members	50
New Haven Health Department Executive Staff	50
Map of New Haven	51

Letter from Mayor DeStefano, Jr.



Dear Fellow Elm City Resident:

I am proud of the initiatives promoted by our Health Department and the staff that is committed to being current and active in responding to the public health needs of the residents of our great City. From keeping our vast selection of restaurants up to code, providing services that address HIV/AIDS, assisting pregnant women with support services, to monitoring the beach water quality, our public health officials are making it happen.

In 2009, the Health Department set the stage for addressing health inequities by becoming a part of the **Health Equity Alliance**, an initiative funded by the Kellogg Foundation and the Connecticut Association of Directors of Health. The work begun through this effort will provide the framework to better address health disparities and engage the community in improving health outcomes.

The Health Department's commitment to evidence-based practices, community outreach, and collaborations with our academic institutions is why it remains a critical asset to our community's health. The contents of the Report are not exhaustive of all the work that our Health Department does, but it begins to paint the picture of what the Health Department does each day to ensure your health and well-being.

We are a City on the move and together we are making New Haven one of the healthiest cities in the nation.

As always,

A handwritten signature in black ink that reads "John DeStefano, Jr." The signature is written in a cursive, flowing style.

John DeStefano, Jr.,
Mayor

Letter from the New Haven Health Director



Dear Fellow Elm City Residents:

The World Health Organization defines health as: "...a state of complete physical, mental and social well-being and not merely the absence of disease or infirmity." The traditional model for health has been based on a disease-specific approach. Although effective in targeting specific illnesses that plague the population, it does not target the broader range of factors that impact health, such as a person's socio-economic status, education level, gender, or where he or she lives. These **social determinants of health** play an integral role in determining our effectiveness in addressing health. In public health, we acknowledge and value this broader vision and work toward health equity for all.

The New Haven Health Department is a premiere public health agency in the region that provides services and programs that target community needs and protect the health of New Haven residents. But this work cannot be done alone or in isolation. Over the next year, we will increase engagement with various community partners, including political leaders, community health providers, grassroots organizations, and the faith-based communities as part of the **Health Equity Alliance** & the larger citywide **Health Matters!** initiative which will allow us to identify and address the underlying conditions that impact health.

These are certainly exciting times and the Health Department is ready to harness the momentum for the health of New Haven. As you read through this Report, you will see the challenges we have encountered and the accomplishments we have achieved. Whether it is confronting an emerging illness, such as the H1N1 flu pandemic, or lobbying intensively at the State Capitol to maintain and sustain needed maternal and child health services, the New Haven Health Department staff works diligently to serve the residents of this City.

Sincerely,

A handwritten signature in black ink that reads "Chisara N. Asomugha". The signature is fluid and cursive, written in a professional style.

Chisara N. Asomugha, MD, MSPH, FAAP
(Acting) Director of Health
Community Services Administrator

ADMINISTRATIVE SERVICES

Under the leadership of the Director of Health, Department staff work diligently to carry out the essential public health services in order to serve their constituent populations. These include: monitoring the health status of the community; investigating health problems; informing, educating and empowering the community concerning health issues; mobilizing partnerships; developing policies and plans to address health concerns; enforcing public health laws and regulations; assuring a competent health care system; evaluating the effectiveness of existing programs and services; and, researching new opportunities to deal with identified health problems and issues.

In cooperation with the Director of Health, fiscal staff manage and oversee the finances of the Department, both general funds and special funded programs. Staff also assures compliance with City administrative requirements and with requests from grantee agencies and maintains fiscal responsibility and accountability for both

New Haven Health Department by Numbers - 2009

Personnel	Number
General Fund	68
Special Fund	35
Total	103

Budget	Dollars
General Fund	\$3,407,304.00
Special Fund	\$11,345,739.29
Revenue	\$908,436.00
Total	\$15,661,479.29

Special Fund Source	Dollars
Federal	\$8,515,704.29
State	\$2,752,152
Other	\$77,883.00
Total	\$11,345,739.29

Grants Awarded	Number
Total	29

the general operating budget and each special fund account.

ADMINISTRATIVE SERVICES

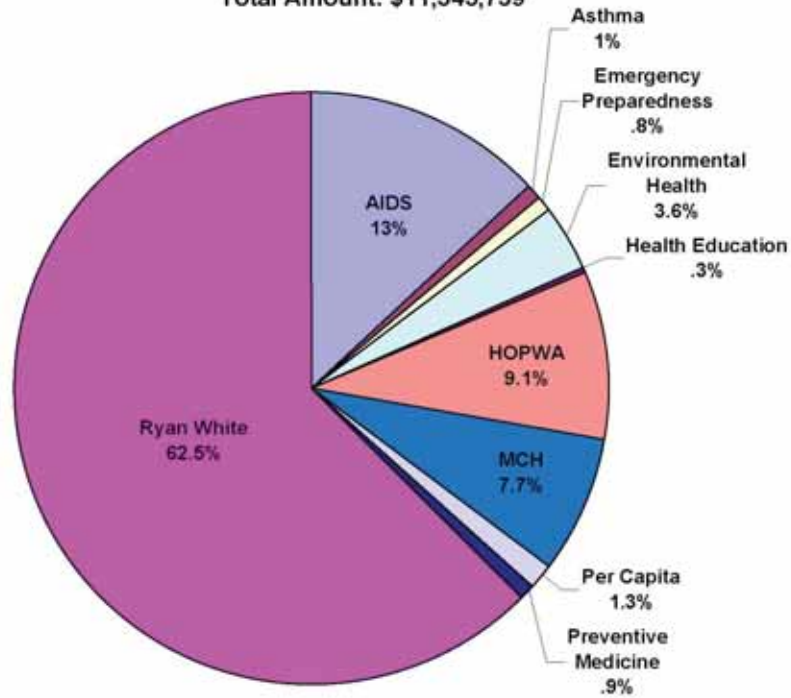
The Health Department was appropriated **\$3,407,304.00** from the City's general funds (local tax dollars) for the fiscal year July 1, 2008 to June 30, 2009. The Department obtains supplemental funding each year from other sources to improve the level of public health services offered to the citizens of New Haven without increasing the burden of cost to the taxpayer. Special funds secured by the Department from federal, state and foundation grants totaled **\$11,345,739.29**. Of that, a substantial amount was received from the federal government for the Ryan White Title I

Program (**\$7,090,763.00**). The New Haven Health Department has a total **103 employees**, sixty-eight of whom are general fund positions and thirty-five are special fund positions.

The Health Department generated **\$908,436.00** through various fees charged for services rendered (e.g., clinic fees), permits issued (i.e., food service licenses, vital records, pool permits, day care center inspections), and reimbursement from the State of Connecticut for school health services provided to non-public schools.

ADMINISTRATIVE SERVICES

Distribution of Special Funds (by Division)
Fiscal Year 2009
Total Amount: \$11,345,739



■ AIDS (\$1,469,855)	■ Asthma (\$109,883)
□ Emergency Preparedness (\$86,865)	□ Environmental Health (\$412,402)
■ Health Education (\$31,976)	□ HOPWA (\$1,029,407)
■ MCH (\$870,155)	□ Per Capita (\$147,153)
■ Preventive Medicine (\$97,280)	■ Ryan White (\$7,090,763)

HIV/AIDS SERVICES

The HIV/AIDS Division's efforts are aimed at the prevention of new HIV/AIDS cases, the identification and facilitation of those infected into needed medical and social services, and the promotion of behavioral changes to reduce the individual's risk for infection. Programs provided include:

HIV Counseling & testing, Syringe Exchange, Drug Treatment Referral and Transportation, AIDS Education and Outreach, HIV Case Management-Medication Adherence, Housing Opportunities for



People with AIDS (HOPWA), Ryan White Part A care services for New Haven and Fairfield Counties, and coordination of the New Haven Mayor's Task Force on AIDS.

Housing Opportunities for People with AIDS (HOPWA) is funded by the Federal Housing and Urban Development (HUD) Agency. In conjunction with the New Haven Consolidated Plan, this program provides housing and supportive

services for low income people who are HIV+ and are either homeless or at risk for homelessness. The program provides services in New Haven, Waterbury, Meriden, and the Connecticut Valley. Over \$1 million dollars in level funding was distributed to seven agencies through a grants process.

Ryan White Part A was awarded \$7.0 million dollars in 2009 to provide care services in two Connecticut counties –

New Haven and Fairfield. This funding was distributed to 29 agencies which served a total of 2,400 unduplicated clients. Services are mandated by the Federal Human Resources and Services Administration (HRSA) and seventy-five percent of all funding must go to "core" services which include: primary medical care, mental health, substance abuse treatment, medical case management, oral health, and health insurance. Twenty-five percent is allocated to "supportive" services which

HIV/AIDS SERVICES

must be linked to medical outcomes and include, medical transportation, outreach, emergency financial assistance, housing assistance, and food-bank home delivered meals.

[The New Haven Mayor's Task Force on AIDS](#) advises the Mayor on emerging and on-going issues impacting HIV/AIDS; identifies, monitors, and supports needed policy initiatives; strengthens relationships among all member of the HIV/AIDS community; and serves as a catalyst for community activities that focus public attention on the HIV/AIDS pandemic. The Task Force participates in the coordination of AIDS Awareness Month, World AIDS Day events, various health fairs including the annual NAACP Health Fair, the National HIV Counseling & Testing Day, and the annual Yale-AIDS Walk, which provides additional funding to member organizations of the Mayor's Task Force on AIDS.

The Staff also participates in the [Connecticut HIV/AIDS Prevention and Care \(CHPC\)](#) services that establish the priorities and funding allocations for the statewide HIV/AIDS plan promoted by the Connecticut State Health Department. This is in response to funding requirements from the Centers

for Disease Control (CDC). The AIDS Division Director co-chairs the New Haven Prevention Group that is responsible for coordinating all of the prevention services being provided by the various HIV/AIDS providers within the City funded by the Connecticut State Department of Public Health.

HIV/AIDS SERVICES

People Living with HIV/AIDS - New Haven - 2009

	Risk/Mode of Transmission													
	IDU		MSM		MSM / IDU		Heterosexual		Pediatric		Other / UK		Total	
	N	%	N	%	N	%	N	%	N	%	N	%	N	%
Total	655	42.6	298	19.4	32	2.1	352	22.9	39	2.5	160	10.4	1,536	100.0

Sex	Risk/Mode of Transmission													
	IDU		MSM		MSM / IDU		Heterosexual		Pediatric		Other / UK		Total	
	N	%	N	%	N	%	N	%	N	%	N	%	N	%
Male	435	43.7	298	29.9	32	3.2	107	10.7	18	1.8	106	10.6	996	64.8
Female	220	40.7	--	--	--	--	245	45.4	21	3.9	54	10.0	540	35.2

Race/ Ethnicity	Risk/Mode of Transmission													
	IDU		MSM		MSM / IDU		Heterosexual		Pediatric		Other / UK		Total	
	N	%	N	%	N	%	N	%	N	%	N	%	N	%
White	133	36.1	152	41.3	12	3.3	43	11.7	1	0.3	27	7.3	368	24
Black	342	44.8	86	11.3	13	1.7	205	26.9	26	3.4	91	11.9	763	49.7
Hispanic	175	45.5	50	13.0	5	1.3	103	26.8	12	3.1	40	10.4	385	25.1
Other	5	25.0	10	50.0	2	10.0	1	5.0	--	--	2	10	20	1.3

Diagnosis Age	Risk/Mode of Transmission													
	IDU		MSM		MSM / IDU		Heterosexual		Pediatric		Other / UK		Total	
	N	%	N	%	N	%	N	%	N	%	N	%	N	%
0-12	--	--	--	--	--	--	--	--	2	100.0	--	--	2	0.1
13-19	--	--	1	4.0	--	--	--	--	22	88.0	2	8.0	25	1.6
20-29	6	7.7	26	33.3	2	2.6	10	12.8	14	17.9	20	25.6	78	5.1
30-39	62	28.1	61	27.6	2	0.9	61	27.6	1	0.5	34	15.4	221	14.4
40-49	200	36.3	112	20.3	17	3.1	162	29.4	--	--	60	10.9	551	35.9
50-59	314	61.0	71	13.8	7	1.4	90	17.5	--	--	33	6.4	515	33.5
60+	73	50.7	27	18.8	4	2.8	29	20.1	--	--	11	7.6	144	9.4

% = Row percentages

IDU = Injecting Drug User

MSM = Men who have sex with men

Breathe Easy: Combating Asthma in New Haven

With the challenges of urban environments, the City of New Haven ranks as the top city in the state for hospital admissions and emergency room visits related to asthma. The New Haven Asthma Initiative, a collaboration between community organizations, city agencies and healthcare institutions, was created to address the devastating impact of asthma on quality of life, improve the ability of people with asthma to manage this condition and decrease admission and emergency room visits related to asthma.

Asthma remains a critical issue in the City of New Haven. According to the 2000 State of Connecticut Asthma Surveillance report, New Haven was number one in the state of Connecticut for hospital admissions (39.1 per 10,000) and emergency department visits (121.6 per 10,000), far surpassing the state averages in both categories (12.7 and 70.8, respectively). At least fifteen percent (15%) of New Haven's school children (K-12) have

Housing has played a significant role in increasing exposure to asthma triggers. Approximately 86% of New Havens' occupied housing units were constructed prior to 1979, with the median year of construction of all housing units being 1943.

asthma compared with a statewide average of 8.9%. Of that number, only thirty-three percent (33%) have asthma medications in school. Approximately 86% of New Haven's occupied housing units were constructed prior to 1979. As a result of the age of the housing there is a higher likelihood that asthma triggers and environmental hazards such as lead, mold and asbestos are present.

Uncontrolled indoor triggers continue to make it difficult for families to lead healthy lifestyles and are a major contributing factor to hospital emergency room visits and hospital admissions for asthma.

ASTHMA INITIATIVE

Since its inception in 2002, the mission of the New Haven Health Department's Asthma Initiative is to reduce associated

morbidity and mortality, reduce the number of lost days of work and absenteeism at

school and improve quality of life for people with asthma in the greater New Haven area. This effort is threefold: an outreach and education component, collaboration through the **Greater New Haven Regional Asthma Initiative (a Coalition comprised of stakeholders in Environmental Protection Agency's Asthma Region 1)**, and direct services through our **Triggers Be Gone** program. Through this tripartite

Breathe Easy: Combating Asthma in New Haven

approach, the New Haven Health Department has engaged state and local stakeholders to discuss best practices, funding opportunities and maximize points of entry for the care of asthmatics. In addition, the Health Department's Asthma Initiative Project Director chairs the Greater New Haven Regional Asthma Initiative.

Triggers Be Gone is the mainstay of direct service related to asthma in the Health Department. Requiring an

asthma diagnosis and a referral from a medical provider, the program provides low income, uninsured and underinsured persons with asthma with supplies for

asthma management, including medication delivery devices (spacers, replacement nebulizer tubing and peak flow meters). Additionally we provide supplies for home environmental control. The program provides air purifiers, mattress and pillow covers, air

Our services play a vital role in the management of asthma by providing education and indoor trigger control items at no cost to those families who need them the most.

conditioners, dust cloths, dust mite powder, mouse and roach traps and hypoallergenic cleaning solution for home asthma trigger control and elimination. Working with school nurses and medical offices around the community, we receive referrals for patients that could benefit from our resources. Through these referrals we maintain a database of baseline information regarding asthma management. In partnership with surrounding cities, a client, upon request, may be referred to Milford's Putting on Airs home inspection program, a program that addresses unidentified asthma triggers in the home.

FUNDING

For the last four years, the program has functioned with total grant funding in the amount of \$93,272.00 annually, with personnel and program funding being providing by Yale New Haven Hospital and the Community Development Block Grant, respectively. These funds have allowed 100-200 persons with asthma to

OUTREACH

We employ the following methods for asthma education and outreach to the community:

- Health Fairs
- Media campaign/features
- Asthma Awareness Month activities
- Dissemination of literature in public places
- Talks/presentations to children
- Talks/presentations to adults and parent organizations
- Web Portal via City of New Haven Website

Breathe Easy: Combating Asthma in New Haven

receive asthma management supplies directly from our office. Additionally these funds have been used to provide education and outreach to hundreds of residents of the City of New Haven annually. Further support is provided across health department divisions including the Environmental Health Bureau and the Maternal and Child and Health Division.

2009-2010 DIRECT SERVICE SUMMARY- TRIGGERS BE GONE

During the period July 1, 2008-June 30, 2009 we received referrals to the New Haven Health Department Asthma Initiative from school health nurses, community physicians, the Visiting Nurses Association (VNA), Milford's Putting on Airs program, and Head Start. As a result of these efforts, the program received over 100 direct referrals for asthma management materials and trigger removal supplies for the 2009 fiscal year. We provided supplies directly to 94 individuals (3 white, 55 black, 1 Asian, 35 other) during this period. This is not inclusive of the hundreds of people who we were able to deliver asthma education to via asthma talks, workshops and health fairs. The program services both adults and

children who are uninsured or underinsured in the Greater New Haven community. The majority of the referrals to the program are minority children (89%) with a slightly higher number of boys serviced than girls.

*For more information on the Asthma Initiative, see Appendix A.

Consumer Protection

Consumer Protection is an integral part of the Health Department's operations. **The Bureau of Weights and Measures** is mandated by the State of Connecticut, Connecticut State Statutes, Title 43-6, to test and inspect every weighing and measuring device in the City of New Haven ensuring consumer protection in the City. *Whether it is at the gasoline pump, riding to your favorite destination in a taxicab, or doing laundry at a Laundromat, our staff help ensure that you are getting what you pay for in the City of New Haven and reducing the likelihood of fraud and misrepresentation of goods.*

Over 900 inspections were completed in 2009 and all consumer complaints were addressed by Health Department staff. Through careful, precise inspections and thorough knowledge of the required mandates by the State of Connecticut, our staff inspect, test and re-examine

over 900 scales and meters during the year. We have continued our practice of unannounced spot checks, providing another layer of benefit to the citizenry of New Haven. We continue to respond to requests from the Federal Government (U.S.D.A.), the State of Connecticut's Department of Consumer Protection, as well as to various consumer complaints.

Devices Inspected by Weights and Measures - New Haven, 2009

Device Type	Number
Small Capacity Scales	387
Large Capacity Scales	19
Gas Meters	514

Inspections Performed by Weights and Measures - New Haven - 2009

Type of inspection	Number
Business establishment* - routine	180
Gas stations - routine	38
State requested	19
Consumer complaint	5

*Grocery stores, laundromats, wholesale, shipping & packing



Look for the Weights & Measures Seal to ensure protection against fraudulent devices

ENVIRONMENTAL HEALTH

The Bureau of Environmental Health maintains as its principal goal the preservation and protection of the environmental quality of the City of New Haven. Bureau staff utilize and enforce applicable sections of the State Public Health Code, State Statutes, and Municipal Ordinances; license and inspect food service establishments; resolve cases of childhood lead poisoning; provide educational outreach activities and assist with the distribution of federal lead abatement funds to prevent lead poisoning; investigate and resolve public health nuisances and infractions of applicable statutes and/or ordinances; monitor water quality of public swimming pools and beach water at Lighthouse Point Park; and, inspect schools, daycare centers, senior centers and summer lunch feeding sites. Bureau staff also assist in preparing for and responding to public health threats, such as anthrax and smallpox.

Funding for the Bureau is derived from various sources, including grants from the state and federal governments in addition to the City of New Haven's general fund. The Bureau is currently comprised of fourteen full and part-time employees. At various times during the year student interns from various

colleges and local high schools assist the Bureau.

A total of 1,278 inspections were performed in 2009 upon the 1,058 food service establishments operating within the City of New Haven. Of these inspections, 128 indicated a failing score which necessitated corrective action and re-inspections by Bureau staff.

Time and resources were, once again, devoted to the City's response to West Nile Virus. For several years, plans have

Licensed Food Establishments - New Haven - 2009

Type	N	%
Restaurant	444	42.0
Café	75	7.1
Institution	65	6.1
School	64	6.0
Caterer	29	2.7
Itinerant vendor	207	19.6
Retail store	131	12.4
Market	10	0.9
Bakery	21	2.0
Processing plant	12	1.1
Total	1058	100.0

been instituted by a host of involved parties to reduce mosquito breeding within the City, to educate the public and to monitor the spread of the Virus.

Within calendar year 2009, 193 pools consisting of a total of 4,322 mosquitoes were trapped within Beaver Pond Park. All mosquito pools were negative for Eastern Equine Encephalitis and West Nile Viruses. The predominant mosquitoes trapped at this site were of

ENVIRONMENTAL HEALTH

the species *Coquillettidia perturbans* and *Culex pipiens*.

Certified pesticide applicators from the City's Department of Public Works (DPW) place Altosid® XR 150 day Extended Residual Briquettes into city-owned catch basins which are prone to contain standing water. Although there are approximately 7,000 catch basins on public property within the City, roughly 3,676 contain standing water and therefore were treated with a larvicidal agent, some more than once.

The water quality at Lighthouse Point Park, the only public beach within the City, was monitored throughout the summer. The majority of water samples secured from Lighthouse, in addition to Fort Hale Park (another local beach area, which has been tested over the years) were found to be of suitable quality for swimming.

The City of New Haven fits the general profile of a jurisdiction with a high level of risk for exposure to lead-based paint by young children. According to the 2000 census, 64% of the City's entire population is low and moderate-income persons and 23% of the entire population falls below poverty. There are now three

New Haven ranks second in the state for the most children in poverty, with 12% of the State's children living in poverty residing in the City.

times as many persons in poverty in New Haven than the state as a whole and four times as many families

in poverty. There is an old housing stock: over 86% of all housing units were constructed before 1979, with a median year of construction of all housing units of 1943. There is a significant low income rental population: 86% of renters living below the poverty level live in structures built before 1979. There are 41,090 pre-1979 housing units with 17,445 units built prior to 1940.

The Bureau applied for and was awarded its fourth round of Lead Based Paint Hazard Control funding from the U.S. Department of Housing and Urban Development (HUD), bringing the total amount of HUD Lead Hazard Control funds awarded to the City since 1995 to \$11,750,000.00. With this new funding, which commenced on January 1, 2009, over \$2,000,000 shall be granted to

private homeowners to be utilized for the lead abatement of at least 200 privately owned housing units. The Lead-Based Paint Hazard Control Program, as designed, addresses the needs of the City's distressed and aging housing stock and the physical well-being of its youth. The

ENVIRONMENTAL HEALTH

City’s program addresses two important sectors of the local housing stock: (1) **\$1,000,000** in deferred forgivable loans will be utilized to assist owners of at least 100 occupied units requiring full abatement due to the presence of a child with elevated blood lead levels, and (2) **\$800,000** in deferred forgivable loans will be used to assist in the creation of lead-safe housing through the rehabilitation of vacant blighted buildings needing lead hazard reduction prior to occupancy by nonprofit developers creating affordable units. Approximately 100 units will be assisted.

A Special Considerations Fund (\$200,000) has been set aside to assist owners of either occupied buildings or vacant buildings being returned to use where there are extraordinary costs to abate or reduce hazards.

The balance of the request **(\$1,000,000)** provides funds in support of community outreach and education, lead testing and abatement specifications, and to staff and implement the program for a period of three years.

[New Haven’s Lead-Based Paint Hazard Control Program](#) is a collaborative partnership consisting of two municipal departments, the Health Department and the Livable City Initiative (LCI) and the Yale/New Haven

[Lead Program & Regional Treatment Center](#). Each partner provides the services and oversight specific to their field of expertise and municipal responsibility.

The Bureau’s third round of HUD funding concluded on June 30, 2009 with a total of 240 housing units completely lead abated. In 2009, 157 applicants were enrolled, 138 inspections conducted and 20 housing units lead abated.

There has been a decreasing trend in the number of children reported to the Health Department with elevated lead levels in their blood. From 2002 to 2009, the City has experienced a 44%

Lead Poisoning in Children 6 Years of Age and Under New Haven - 2009

Year	Children tested	Lead poisoned *	
	N	N	%
2002	2557	448	17.5
2003	2345	359	15.3
2004	2078	385	18.5
2005	2077	332	16.0
2006	2018	299	14.8
2007	1848	247	13.4
2008	2091	259	12.4
2009	1981	194	9.8

* Blood lead level = > 10µg/dL

reduction. The above chart indicates the number of children reported to the Health Department $\geq 10\mu\text{g/dL}$ over the past eight years.

ENVIRONMENTAL HEALTH

However, New Haven, still has been reporting the most lead poisoned children of all cities in Connecticut.

As in prior years, the Bureau celebrated the legacy of Dr. Martin Luther King, Jr. by participating in an event held in January to promote environmental justice. The event is co-sponsored by Yale University and the State of Connecticut Department of Environmental Protection. Held at the Peabody Museum of Natural History at Yale University, the event is always well attended by hundreds of families.

Bureau staff distributed lead poisoning prevention literature and “give away” items stressing the “Lead Free is Best for Me” message.

With resources provided by the public relations firm of Burson-Marsteller (and previously by Hill & Knowlton), the Bureau of Environmental Health has greatly enhanced its educational outreach efforts. Funding provided by Benjamin Moore Paint Company has enabled the firm of Burson-Marsteller to train and provide Bureau staff with interactive educational presentations designed for various venue sites. An artistically designed presentation booth equipped with a television/video cassette recorder and various “give away” items such as t-shirts, pens,

sponges, soaps, frisbees and reading materials related to lead poisoning prevention have been created to attract and educate participants.



The lead poisoning prevention educational campaign has been an overwhelming success. During the year, over **18,000 people visited** our “booth” at schools, neighborhood events, community health fairs, church picnics and day care centers in addition to events sponsored by the Bureau at Lighthouse Point Park, as well as our **“Don’t Spread the Lead” campaign held within hardware stores**. Media coverage (both print and electronic) has also been extensively utilized this year to spread the lead poisoning prevention message. Radio broadcasts, especially a radio public service announcement read by Mayor John DeStefano, Jr. and Alderman Jorge Perez (who read the message in Spanish), television coverage and newspaper articles

ENVIRONMENTAL HEALTH

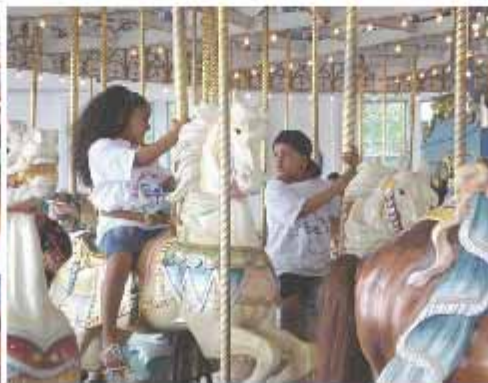
appeared throughout the year to bolster the Bureau's campaign. The radio announcements which aired daily during the entire months of October, November and December on two radio stations serving the greater New Haven area (WYBC 94.3 FM and WABS 690 AM, Radio Amor) in addition to a listing of other radio stations reached well over one million listeners.



Although the City of New Haven has made great strides in creating lead safe housing and reducing the incidence of childhood lead poisoning, there remains a critical need for continued action.

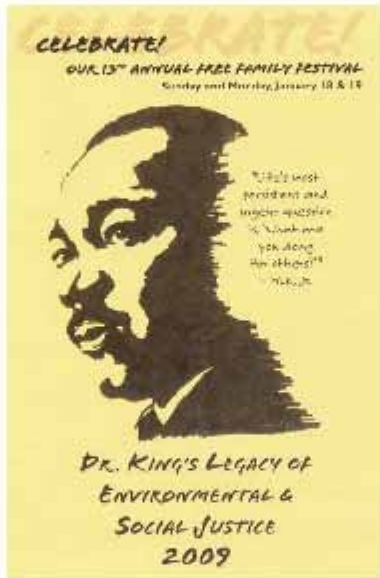
ENVIRONMENTAL HEALTH

City of New Haven, CT Health Department
Bureau of Environmental Health
Lead Education Picnic at Lighthouse Point Park
June 14, 2009



ENVIRONMENTAL HEALTH

City of New Haven, CT Health Department
Bureau of Environmental Health
Dr. Martin Luther King Legacy of Environmental & Social Justice
Yale Peabody Museum - January 18th and 19th, 2009



ENVIRONMENTAL HEALTH

Neighborhood	Tract	2005	2006	2007	2008	2009*
Amity	12	1	3	0	2	4
Annex	27	1	3	4	1	0
Beaver Hill	14	5	8	6	7	3
Dixwell	16	2	6	6	3	1
Downtown	1	1	0	0	0	0
Downtown	17	0	0	0	0	0
Dwight	7	6	9	6	5	2
East Rock	19	1	1	1	0	3
East Rock	20	0	0	1	2	1
Edgewood	9	14	9	24	3	3
Fair Haven	23	9	14	2	9	8
Fair Haven	24	8	8	9	5	6
Fair Haven	25	4	4	4	4	4
Fair Haven Heights/ Quinnipiac Meadows	26	2	8	4	2	3
Hill	3	3	5	6	2	6
Hill	4	5	5	4	2	3
Hill	5	6	5	5	9	9
Hill	6	3	5	9	8	3
Long Wharf	2	0	1	0	2	0
Morris Cove	28	0	0	1	0	0
Newhallville	15	18	13	7	6	3
Prospect Hill	18	6	4	1	5	1
West River	8	5	10	4	9	7
West Rock	13	2	0	2	0	1
Westville	10	0	0	1	1	3
Westville	11	0	0	0	0	0
Wooster Square	21	0	0	0	1	2
Wooster Square	22	1	0	0	0	0
Total		103	121	107	88	76

Childhood Lead Poisoning Investigations Neighborhood - New Haven - 2005-2009

An investigation may be initiated if a child is found to have a blood lead level of 20µg/dl or greater*

* In 2009, values reflect venipuncture $\geq 15 \mu\text{g/dl}$.

HEALTH EDUCATION

The Health Education Division (HED)

delivers various health education and risk reduction services to the New Haven community and trains outreach staff to perform home safety assessments. In 2009, the HED administered programs to reduce premature death and disability from heart disease, diabetes, stroke, and unintentional injury among New Haven residents.

The Diabetes Self-Care Education Program

provided through the Health Education Division assists diagnosed diabetics in controlling their diabetes and in reducing their risk for heart disease, stroke, and other serious, diabetes-related complications. Program participants learn about daily glucose self-monitoring, nutrition, meal planning and portion control, foot care, exercise, sick-day rules, and other aspects of diabetes management. Pre-diabetics and those involved in caring for a diabetic are also welcomed into the program. A certified diabetes educator/registered dietitian conducts



the seven-session program several times a year.

The Unintentional Injury Prevention Program

coordinates a child residential-safety program implemented by the Maternal and Child Health Division. Over the past year, outreach staff performed 20 home safety assessments and corrected numerous hazards that threatened the safety of children under the age of six years who lived in the homes. Hundreds of safety supplies, such as cabinet locks, electrical outlet plugs, carbon monoxide alarms, and small object testers as well as educational materials were provided for

New Haven families. Reducing unintentional injury and death in children due to motor vehicle crashes is a priority of the New Haven Health Department. In 2009, HED staff conducted three community-wide presentations for over

50 families as part of the **Child Passenger Safety Education Program**.

In 2010, the HED will be expanding its presentations to include eight Head Start Centers in New Haven.

HEALTH EDUCATION

HED staff continue to partner with



Quinnipiac
University's
Occupational
Therapy
Department to

coordinate the **Greater New Haven**

Chapter of Safe Kids CT. "Safe Kids"

is a worldwide organization dedicated to reducing unintentional injury and death among children up to the age of fourteen. During the year, Safe Kids Greater New Haven held two car-seat check events. Certified child passenger safety technicians assisted parents in the correct installation of their children's safety seats. Safe Kids Greater New Haven also promoted pedestrian safety on "International Walk to School Day" at Fair Haven K-8 School. Safe Kids staff, along with Fed-Ex Express (an event sponsor), joined teachers and K-2 students in activities which focused on safe walking practices. The New Haven Fire Department also participated in the event. Overall, the HED in collaboration with Quinnipiac University, facilitated Safe Kids' involvement in 11 community health and safety fairs, serving over 1,000 New Haven and Greater New Haven residents.

LABORATORY

The Bureau of Laboratories of the New Haven Health Department is a state and federally certified Public Health Laboratory (PH-0708). It provides the Department, other City agencies and the public with quality assured clinical and environmental laboratory services. These services include serological and microbiological tests in support of the Department's Sexually Transmitted Disease Clinic (STD), analysis of the sanitary quality of recreational bathing water, the distribution of vaccines to local health care providers and the disposal of biological hazardous wastes.

The water quality at the City's Lighthouse Point Park Beach is monitored weekly to check for microorganisms that would indicate the presence of contamination from sewage or animal waste. Testing is performed throughout the swimming season, from Memorial Day until Labor Day. These samples are collected by Health Department sanitarians and laboratory personnel. No closings of the beach due to high levels of bacteria at Lighthouse Point Park were necessary in 2009.

In cooperation with the Connecticut Department of Public Health's

Tests Performed by Bureau of Laboratories - New Haven Health Department - 2009

Test	Used to detect	Performed	Detected	
		N	N	%
Culture	gonorrhea	155	1	0.6
Dark Field Microscope	syphilis	3	0	0.0
Gram Stain	gonorrhea, urethritis, vaginitis	695	303	43.6
Serology	syphilis	969	18	1.9
Serology	HIV	772	1	0.1
Water Sample	elevated bacterial level	81	0	0.0
Wet Prep	candidiasis, trichomonas, vaginosis	237	126	53.2

* Lighthouse Beach

To allow our physicians to quickly diagnose and treat patients, tests are done in the Laboratory for a variety of infections, including gonorrhea, urethritis, vaginitis, Candida (yeast), trichomonas, syphilis and HIV, as the patients wait. Screening tests are also performed for syphilis on all STD Clinic clients, for the HIV Counseling and Testing Clinic and for the Yale-New Haven Community Health Care Van.

Immunization Program, Laboratory staff are responsible for maintaining the Health Department's supply of pediatric vaccines, adult Hepatitis A and Hepatitis B vaccines for the STD Clinic, and was the primary receiving and storage point for seasonal and H1N1 influenza vaccines.

The Laboratory Director acted as logistics and supply officer for the H1N1 clinics conducted by the Health

LABORATORY

Department. In this capacity, 5800 doses of vaccine were obtained from the Connecticut Department of Public Health and The Hospital of St Raphael. Vaccine was distributed to community providers and school based health clinics and was administered by our public health nurses through clinics conducted by the Health Department.

The Laboratory Director participates in the preparation and planning for

emergency response. In March, the Director represented the Health Department at an intensive week-long training exercise at the National



Emergency Response Training Center in College Station, Texas. Working with members of the New Haven Police, Fire, and Public Works Departments as well as attendees from other State and regional agencies, the City's incident command structure was tested in a series of exercises tailored specifically for New Haven.

The Lab Director continued as the Health Department's Safety Officer, responsible for assuring the

Department's compliance with OSHA and other employee safety regulations. He also represented the Health Department on New Haven's city-wide Safety Committee and the General Government Safety Committee.

The disposal of all hazardous, biological waste material generated by the Lab, the Preventive Medicine Clinic, the Needle Exchange Program and the Bureau of Environmental Health is a

function of the Laboratory staff.

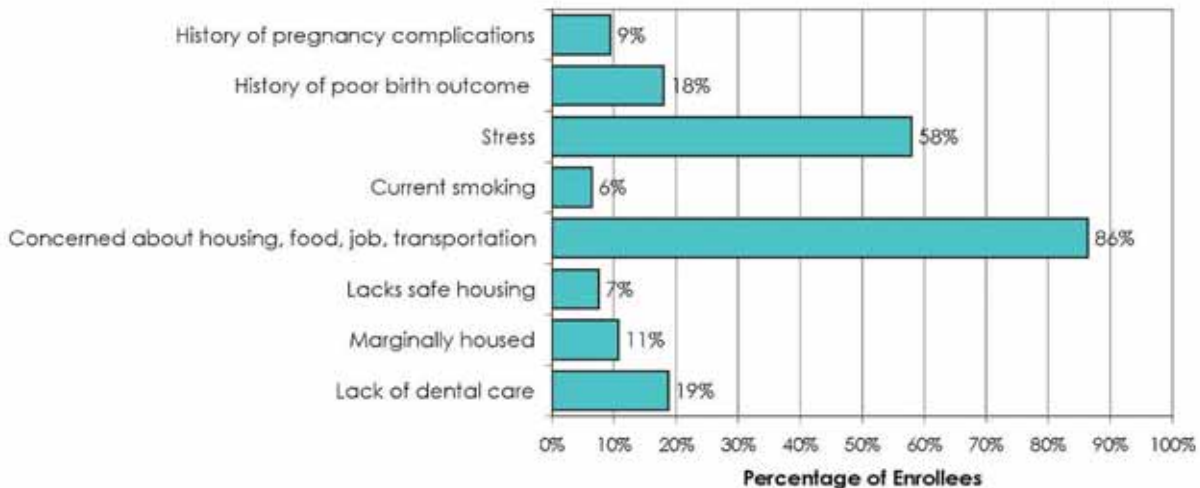
MATERNAL AND CHILD HEALTH

Made up of seventeen outreach workers and supervisors, with an annual budget near \$900,000, the Maternal and Child Health Division of the Health Department is spearheading the movement to improve pregnancy outcomes, reduce the infant mortality rate and promote family health and wellbeing in the City of New Haven.

The Maternal and Child Health (MCH) Division of the New Haven Health Department provides bicultural/bilingual community-based outreach and case management support for pregnant and parenting women and their families in order to successfully access health care and other support services. The Division works to ensure that children are born as healthy as possible and that parents are equipped with the necessary skills to raise their children in a supportive, nurturing and safe environment. In 2009, the MCH Division enrolled and

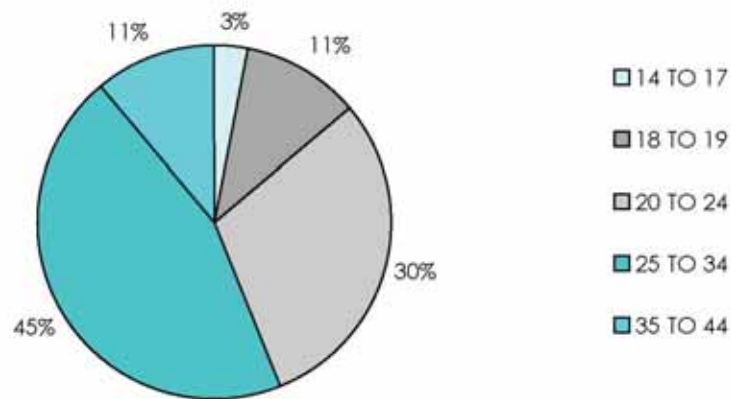
provided services for 888 pregnant or postpartum women and 618 children. One thousand and two clients were identified as uninsured. Nineteen percent reported lacking dental care, 6% reported current tobacco use, 86% identified housing, food, job and transportation as concerns and 58% reported stress as a major issue impacting their lives. Program participants ranged in age from 14 to 44 with the majority of births occurring to women between the ages of 20 to 34.

Perinatal Risk Factors - Pregnant and Postpartum Women Enrolled in Healthy Start Programs - New Haven Health Department - FY08/09



MATERNAL AND CHILD HEALTH

Age of Prenatal and Postpartum Women Enrolled in Healthy Start Programs
- New Haven Health Department - FY08/09



Low Birth weight and Prematurity

The Division collaborated with the Yale School of Public Health to conduct a study on low birth weight (LBW) in New Haven's neighborhoods. The most important risk factors for LBW in New Haven identified in the report, included: maternal Black race/ethnicity, maternal chronic hypertension, and being over age 35. The report also identified four neighborhoods, Amity, Fair Haven Heights, Newhallville, and Quinnipiac with the highest proportion of LBW and recommended that they receive additional outreach.

Protecting Against Childhood Diseases

Assuring that children remain up-to-date with their immunizations and that their vaccination records are available when they need them, the Connecticut legislature authorized the State Department of Public Health to

establish a confidential computerized registry of preschool-aged children and their immunization records.

Immunization coverage reports are generated for all CT pediatric practices based on a child's immunization status on their 2nd birthday. Children born in 2006 are tracked through 2008 and the data are verified and reported in 2009. Maternal and Child Health immunizations rates for the 2006 birth cohort were 76%, and the MCH Pediatric Immunization program reported a 3% combined increase in immunization rates and case finding in the 2009 report. Parents may obtain a copy of their child's immunization history by calling 203- 946-7097 or the State Immunization Program, Department of Public Health at (860) 509-7929. Proper identification is required.

MATERNAL AND CHILD HEALTH

Strengthening Families and Protecting Children

The Division's Nurturing Families Network (NFN) Program helps clients receive parenting, newborn care, and breastfeeding support, as well as connections to various community resources. [It served 36 families in FY 2008-2009, including 37 newborns, 19 prenatal and 17 post-partum clients.](#)

Forty-five group sessions were conducted with prenatal teenage girls. According to research conducted by the University of Hartford's Center for Social Research, almost two-thirds of NFN mothers completed high school after two years in the home visiting program (an increase from about half at entry), and the proportion of mothers employed almost doubled, to about 50%. Fathers' rates of high school completion also rose to about the same level as the mothers, and the proportion of fathers employed full-time rose dramatically, from 15% at entry into the program to 38% two years later.

Access to Health Care for Families

Access to health care took the national stage through 2009. In the City of New Haven, [the Health Department serves as the South Central Connecticut Regional Administrator for the HUSKY Program providing assistance for pregnant women and their families](#)

[applying for health insurance.](#) (HUSKY is Connecticut's State Health Insurance Program.) Clients receive short-term, limited care coordination, a comprehensive risk assessment, referrals and follow up through a partnership administered by the Community Foundation for Greater New Haven's Federal Healthy Start Initiative.



For more information about MCH programs or for HUSKY insurance application assistance call 203-946-8187.

[*For more information on MCH Programs, see Appendix B.](#)

EMERGENCY PREPAREDNESS

Failing to plan is planning to fail.” Alan Lakein

The Office of Emergency Preparedness works to ensure that the City of New Haven responds effectively to natural disasters, acts of terrorism and other emergencies that could affect the health of the public. **This mission** is achieved through planning, training, educating and by building relationships and collaborating with local, regional, state, and community stakeholders, including the faith-based community.

Much of the work of the Office in 2009 focused on preparing for and responding to H1N1 influenza. The Office managed the supply of H1N1

vaccine, operated vaccination clinics, and monitored cases of influenza (see Figure). The Office coordinated efforts with the New Haven Board of Education to conduct

educational outreach using handouts and posters for schools (in Spanish and English).

Over 1300 posters were distributed. A written plan for school closings due to influenza was also developed. Proper hand-washing and other personal prevention strategies were emphasized.

In addition, the New Haven Health Department website was updated regularly to provide the most current information to the public. A radio broadcast was produced and placards were displayed on City buses.

In the event of a bioterrorism attack the New Haven Health Department is prepared to do mass dispensing, providing medications quickly to the entire City of New Haven population to prevent disease.

The Office undertook a number of activities to prepare for such an event including:



- Conducting a Technical Assistance Review. This annual review is performed with regional, state and federal partners to identify strengths and weaknesses in the Department's plans to conduct mass dispensing.

- **Partnering with the Connecticut Dental Association to operate the**

EMERGENCY PREPAREDNESS

Mission of Mercy (MOM), a two day clinic addressing unmet dental health needs. Participation in this event allowed the Office to operationalize public health planning and practices and to use the Incident Command System (ICS), an emergency management system used in the United States. It served as a valuable opportunity to gain real life experience setting up a large clinic and managing a significant group of people requiring treatment quickly. The event demanded the collaboration of a variety of City Departments and private businesses. **The Association and 1,000 professional and community volunteers treated almost 2000 patients seeking routine and emergency dental care during the two consecutive days.**

- Working with the Cornell Scott Hill and Fair Haven Health Centers to plan for mass dispensing.

Other activities included:

- Developing a Continuity of Operations plan for the Health Department. The plan spells out how essential public health services would be maintained during a disaster.
- Developing a Public Health Safety Officer training course for use throughout Connecticut. This work was funded by the State of Connecticut.

- Providing educational materials at public health fairs and community sponsored events
- Recruiting and training volunteers, staff, and community stakeholders in Emergency Response planning and practices. **The department has 118 confirmed Emergency Response Team volunteers.**
- Redesigning and updating the City's emergency information webpage in collaboration with the New Haven Office of Emergency Management (OEM) on a variety of topics, such as disaster preparedness, product recalls, water shortages, floods, etc.



PREVENTIVE MEDICINE

Our Preventive Medicine Clinics provide information, screening, prophylaxis and treatment for infectious diseases, including tuberculosis testing, STD screening, HIV counseling/testing and adult immunizations.

The New Haven Health Department continues to monitor infectious diseases, trace disease patterns and their origins and investigate communicable diseases known to threaten the public's health. [Through our array of clinics, public health interventions are provided, reducing morbidity and mortality for New Haven residents.](#) Moreover, the Department provides a central surveillance resource for information related to communicable diseases. The goal of the Preventive Medicine Division is to trace disease patterns and their origins.

H1N1 AND INFLUENZA

In 2009, the Health Department was challenged by the H1N1 flu pandemic. Outbreaks of the new flu strain were observed in May and June and again from October to December. Despite challenges at the federal level in distribution, the Health Department was able to administer the vaccine to all eligible groups. Five-hundred ninety-two (592) H1N1 vaccines were administered by the Department in 2009.

The seasonal flu vaccine program held clinics at New Haven City Hall, the New Haven Health Department Clinic and at senior centers throughout the City; 1,329 vaccines were administered at the various sites. Another 1,400 vaccines were distributed to private medical facilities and 200 vaccines were donated to City shelters for the homeless.

SEXUALLY TRANSMITTED DISEASES (STD)

[In 2009, 1,152 patients were seen at the Health Department's STD Clinic, of which 748 were New Haven residents.](#)

Sexually transmitted diseases diagnosed in New Haven residents are reportable to the New Haven Health Department. A total of 448 laboratory confirmed cases of gonorrhea were reported in 2009 for the entire City. This represents a 22.6% decrease from the previous year. [Laboratory reports of gonorrhea continue to be at one of the lowest levels for the past decade.](#) Sixty-seven percent (67%) of the reported cases were diagnosed in 15-24 year olds. Seventy percent (70 %) of all cases were Black, 9% were Hispanic, and 6% were White.

PREVENTIVE MEDICINE

New Haven's cases of newly diagnosed syphilis remain at historic lows. Eight (8) cases were reported in 2009, a 46.6% decrease from the previous year.

All were male, five (5) of whom were reported to be men who have

sex with men. The Department continues aggressive contact tracing and treatment for infected individuals. Chlamydia continues to be the most prevalent STD in the City with 1,506 laboratory reported cases, despite a 4.0% decrease in new cases from the previous year. Seventy-two percent (72%) of the cases were among 15-24 year-olds. Fifty-eight percent (58%) of all cases were Black, 15% were Hispanic, and 5% were White. HIV counseling and testing is a mainstay of our preventive medicine clinics. All clients entering the Health Department's STD clinic receive basic counseling regarding HIV prevention. There was a 13.5% increase in HIV testing from previous years. This year, 772 individuals agreed to be tested. All of the testing used a Rapid Test reagent so that patients were able to receive results during their clinic visit. One (1) individual tested positive for the HIV virus in the STD Clinic and was given

The number of new cases of sexually transmitted diseases (including gonorrhea, Chlamydia and syphilis) decreased compared to the previous year.

appropriate advice and referrals. The State Department of Public Health provides staff who counsel individuals in our STD Clinic who have had sexual contact with persons newly diagnosed with HIV infections.

At the end of 2009, The City of New Haven reported 2,611 cumulative cases of AIDS since data collection started in 1982. A total of twenty-one (21) AIDS cases were added during 2009. This would represent an approximately forty-seven percent decrease in the number of new cases from the previous year. In addition, the City diagnosed nineteen (19) HIV (non-AIDS) cases in 2009. Four-hundred-forty-five cumulative cases of HIV (non-AIDS) have been diagnosed since 2002.

TUBERCULOSIS

In 2009, the City documented eleven cases of tuberculosis (strain: *mycobacterium tuberculosis*). In the last decade, tuberculosis in the City has remained at its lowest historical level and the yearly cases have stabilized between 6-11 persons. No drug resistant strains were identified in 2009. Tuberculosis tends to occur in populations from countries with endemic

PREVENTIVE MEDICINE

tuberculosis. All of the cases were treated by a DOT (Directly Observed Therapy) health-department Nurse.

MOVING FORWARD

In the coming year, our newly hired Epidemiologist will be enhancing public health surveillance and other data collection and analysis to promote evidence-based public health practices in New Haven.

PREVENTIVE MEDICINE

Reported Communicable Diseases - New Haven - 2000 - 2009

Diseases	2000	2001	2002	2003	2004	2005	2006	2007	2008	2009
AIDS	80	115	88	89	75	77	57	28	40	21
Chlamydia	812	809	992	1089	1257	1371	1645	1685	1572	1516
Encephalitis	0	0	0	0	1	0	0	0	0	0
Giardiasis	0	0	2	0	0	1	5	0	4	13
Gonorrhea	478	367	274	389	350	313	465	443	582	448
Hepatitis A	4	22	1	9	2	2	4	3	0	0
Hepatitis B	41	67	113	67	85	80	72	54	41	46
Hepatitis C	250	412	355	270	386	543	504	422	170	128
Legionnaires' Disease	0	0	0	1	0	2	1	2	2	4
Malaria	1	1	0	0	0	2	1	1	1	1
Measles	0	1	0	2	0	0	1	0	0	0
Meningitis (Meningococcal)	0	2	3	1	0	1	0	1	0	0
Meningitis (Other)	2	0	0	0	0	0	0	1	0	0
Mumps	0	0	0	1	0	0	1	0	0	0
Salmonella	2	6	14	1	3	4	13	12	17	21
Shigella	0	3	2	0	2	1	1	2	0	1
Syphilis (Other)	0	4	4	1	2	12	3	6	9	4
Syphilis (Primary / Secondary)	1	8	2	6	1	1	2	1	6	4
Tuberculosis (Mycobacterium)	11	9	10	10	10	6	9	10	8	11
Typhoid Fever	0	0	0	0	0	0	2	0	2	0
Whooping Cough (Pertussis)	0	1	3	0	2	7	3	2	2	2

Beginning 2008: Hepatitis B and C data were obtained from the State of Connecticut Department of Public Health Registry.

PREVENTIVE MEDICINE

Chlamydia Laboratory Reports - New Haven Residents - 2009

Age	Female		Male		Total	
	N	%	N	%	N	%
0-9	0	0.0	0	0.0	0	0.0
10-14	19	1.7	0	0.0	19	1.3
15-19	450	40.0	109	28.6	559	37.1
20-24	401	35.6	129	33.9	530	35.2
25-29	167	14.8	76	19.9	243	16.1
30-34	46	4.1	32	8.4	78	5.2
35+	39	3.5	34	8.9	73	4.0
Unknown	3	0.3	1	0.3	4	0.3
Total	1125	100.0	381	100.0	1506	100.0

Race/Ethnicity	N	%
Black	867	57.6
Hispanic	233	15.5
White	73	4.8
Other	4	0.3
Unknown	329	21.8
Total	1506	100.0

Gonorrhea Laboratory Reports - New Haven Residents - 2009

Age	Female		Male		Total	
	N	%	N	%	N	%
0-9	0	0.0	0	0.0	0	0.0
10-14	9	3.1	2	1.2	11	2.5
15-19	91	31.7	46	28.6	137	30.6
20-24	109	38.0	56	34.8	165	36.8
25-29	47	16.4	21	13.0	68	15.2
30-34	13	4.5	11	6.8	24	5.4
35+	17	5.9	25	15.5	73	16.3
Unknown	1	0.3	0	0.0	1	0.2
Total	287	100.0	161	100.0	448	100.0

Race/Ethnicity	N	%
Black	312	69.6
Hispanic	42	9.4
White	28	6.3
Other	1	0.2
Unknown	65	14.5
Total	448	100.0

PUBLIC HEALTH NURSING

The Bureau of Nursing is committed to ensuring an optimal level of wellness for a culturally diverse urban community by promoting and encouraging a healthy lifestyle for its citizenry. Through the delivery of health care services, education and counseling and partnerships with municipal agencies and community organizations, the Bureau identifies and assesses school and community needs to promote safety and disease prevention.

The Bureau provides school health nursing services for approximately **22,000 pre-kindergarten through 12th graders at 53 public and non-public school sites in New Haven**, ensuring that health-related barriers to learning are addressed. The Bureau also has the responsibility for health services for the Board

of Education's Early Childhood Programs, which

include Head Start, school readiness and the **New Haven Child**



Development Programs (Day Care), serving approximately 1,200 children. The Director of Public Health Nursing supervises 40 Public Health Nurses. The Bureau staff includes a Pediatric Nurse Practitioner assigned to the Katherine Brennan School-Based Clinic, a Registered Nurse (Health Coordinator)

for Early Childhood services, and a Clinic Charge Nurse responsible for various New Haven Health Department

clinics, including STD, children's and adult immunizations clinics. The Bureau also has an Audiometrist who performs State mandated hearing screenings for students in our public and non-public schools. The Bureau **partners with the Cornell Scott-Hill Health Corporation**, a local federally qualified health center, which provides a staff physician to serve as Medical Advisor to the Bureau and to the New Haven Board of Education.

The Children's Clinic is held every Thursday during the school year at the Health Department. Physical exams and immunizations are provided to students enrolled in our schools.

During 2009, the clinic served 398

PUBLIC HEALTH NURSING

students, administered 531 immunizations and provided physical examinations for 337 students.

The Bureau is proud of its partnership with the Helen Keller Worldwide ChildSight® Program, a collaboration that conducts vision screening and provides eyeglasses to students enrolled in middle school. Since the year 2000, approximately **23,800 students have been screened and over 5200 pairs of glasses have been distributed.**

School nurses promote asthma education in the schools and distribute medical equipment provided by the Asthma Initiative such as peak flow

annual Asthma Awareness Campaign, “Let’s Stop Asthma In Its Tracks.”

New Haven Public Schools Wellness Committee. A nationally-recognized, collaborative effort was undertaken ten years ago with the Bureau of Nursing and representatives from the school community in order to evaluate the breakfast and lunch programs within the schools. As a result of recommendations made, healthy foods are now included in school menus and vending machines have been eliminated from schools.

School-Based Health Clinics. The Health Department, federally qualified

health centers and the Board of Education work together to promote health and well-being within the school setting. This

School Asthma Data By Grade – New Haven School District - 2008-2009

Asthma Prevalence By Severity	K - 8		Middle School		High School		Private & Parochial		All	
	N	%	N	%	N	%	N	%	N	%
Mild	701	5.5	77	9.9	167	3	41	5	986	5
Moderate	125	1.0	19	2.4	30	1	7	1	181	1
Severe	26	0.2	3	0.4	6	0	1	0	36	0
Exercise Induced	87	0.7	9	1.2	53	1	4	0	153	1
Unclassified	1132	8.9	42	5.4	668	13	62	7	1904	10
All Severity	2071	16.4	150	19.3	924	17	115	13	3260	17

Percentage of Asthmatics On Medications in School	K - 8		Middle School		High School		Private & Parochial		All	
	N	%	N	%	N	%	N	%	N	%
Inhaler as needed	1111	53.6	81	54.0	104	11.3	63	54.8	1359	41.7
Nebulizer as needed	51	2.5	1	0.7	5	0.5	2	1.7	59	1.8

meters, spacers and nebulizers to those students requiring them. School nurses also help to plan and participate in the

partnership provides an opportunity for effective interaction and communication between all partners regarding student health issues. As the **School Change** campaign progresses in 2010, the

PUBLIC HEALTH NURSING

nursing staff will continue to participate in the Board of Education’s “Wrap Around Services” (Coordinated School Health) Committee.

Our nurses are public health nurses—the frontline of defense against threats of bioterrorism. Planning for post-event clinics have been orchestrated and thirteen registered nurses and two doctors have been trained in the administration of smallpox vaccine. Our nursing staff participate in on-going education and training to respond to public health emergencies. With the H1N1 pandemic this year, the New Haven Health Department nurses administered vaccine at clinics throughout the New Haven community. The Bureau of Nursing is committed to educating the next generation of public health professionals. Through an affiliation agreement with both Southern Connecticut State University and the Yale School of Nursing, senior nursing students from both institutions take part in electives and mentorship programs.



PUBLIC HEALTH NURSING

Prevalence of Student Health Problems - New Haven Schools - 2008-2009

Health Problems	Grades K - 8		Middle School		High School		Private & Parochial		All	
	N	%	N	%	N	%	N	%	N	%
Allergy – bee	33	0.3	5	0.6	20	0.4	1	0.1	59	0.3
Allergy - latex	17	0.1	0	0.0	9	0.2	1	0.1	27	0.1
Allergy – tree nuts	62	0.5	7	0.9	12	0.2	16	1.8	97	0.5
Allergy - peanuts	122	1.0	16	2.1	33	0.6	15	1.7	186	0.9
Allergy - environment	223	1.8	23	3.0	109	2.0	23	2.6	378	1.9
Allergy - medication	164	1.3	32	4.1	112	2.1	19	2.1	327	1.7
Allergy - other food	248	2.0	27	3.5	108	2.0	27	3.0	410	2.1
Asthma	1993	15.8	150	19.3	908	17.0	124	13.9	3175	16.1
Respiratory (other)	28	0.2	0	0.0	9	0.2	2	0.2	39	0.2
Cardiac/Circulatory	98	0.8	4	0.5	58	1.1	5	0.6	165	0.8
Dental / Mouth	65	0.5	0	0.0	5	0.1	0	0.0	70	0.4
Diabetes - Type I	21	0.2	0	0.0	20	0.4	1	0.1	42	0.2
Diabetes - Type II	10	0.1	0	0.0	14	0.3	1	0.1	25	0.1
Cognitive deficits*	758	6.0	124	15.9	374	7.0	14	1.6	1270	6.5
Ear/Hearing	116	0.9	3	0.4	44	0.8	5	0.6	168	0.9
Endocrine/Nutritional	80	0.6	4	0.5	50	0.9	2	0.2	136	0.7
Eye / Vision	257	2.0	117	15.0	51	1.0	15	1.7	440	2.2
Gastrointestinal/GU	108	0.9	12	1.5	39	0.7	10	1.1	169	0.9
Hematologic/Oncologic	108	0.9	7	0.9	37	0.7	5	0.6	157	0.8
Musculoskeletal	114	0.9	0	0.0	63	1.2	9	1.0	186	0.9
Neurological **	214	1.7	25	3.2	99	1.9	5	0.6	343	1.7
Nose/Throat	17	0.1	0	0.0	20	0.4	3	0.3	40	0.2
Obstetric	2	0.0	0	0.0	56	1.0	0	0.0	58	0.3
Skin	201	1.6	13	1.7	60	1.1	11	1.2	285	1.4
Other	13	0.1	0	0.0	51	1.0	1	0.1	65	0.3
Total Health Problems	5129	40.5	570	73.2	2384	44.7	316	35.3	8399	42.7
Total students with at least one	3927	31.0	254	32.6	1696	31.8	256	28.6	6133	31.2

* ADD/ADHD, developmental delays

** Including headaches

PUBLIC HEALTH NURSING

Student Health Data – New Haven School District – 2008 - 2009

Medications taken at school under nurse supervision	Grades K to 8	Middle School	High School	Private & Parochial	Total
Asthma nebulizer, as needed	51	1	5	2	59
Asthma inhaler, as needed	1111	81	104	63	1359
Psychotropic drugs, daily	79	4	6	1	90
Diabetic insulin injection	3	0	0	1	4
Diabetic insulin pump	7	0	3	1	11
Other diabetic medication	24	0	7	3	34
Epi-Pen	173	13	29	26	241
Other daily medication	20	0	4	8	32
Other medication, as needed	216	18	33	18	285
Total medications	1684	117	191	123	2115

Special care performed by school nurse	Grades K to 8	Middle School	High School	Private & Parochial	Total
Ostomy tube feedings	2	0	0	0	2
NG tube	2	0	0	0	2
Suctioning	2	0	0	0	2
Glucose monitor	22	0	14	1	37
Catheter	2	0	1	0	3
Ostomy care	1	0	0	0	1
Other treatment	4	0	0	0	4

Vision Screening	Grades K - 8	Middle School	High School	Private & Parochial	Total
Screened by school nurse	4176	179	773	667	5795
Screened by ChildSight®	1824	601	0	0	2425
Total Screened	6000	780	773	667	8220

Hearing Screening	Grades K - 8	Middle School	High School	Private & Parochial	Total
Screened by Audiometrist	7952	273	60	741	9026

PUBLIC HEALTH NURSING

students, administered 531 immunizations and provided physical examinations for 337 students.

The Bureau is proud of its partnership with the Helen Keller Worldwide ChildSight® Program, a collaboration that conducts vision screening and provides eyeglasses to students enrolled in middle school. Since the year 2000, approximately **23,800 students have been screened and over 5200 pairs of glasses have been distributed.**

School nurses promote asthma education in the schools and distribute medical equipment provided by the Asthma Initiative such as peak flow

annual Asthma Awareness Campaign, “Let’s Stop Asthma In Its Tracks.”

New Haven Public Schools Wellness Committee. A nationally-recognized, collaborative effort was undertaken ten years ago with the Bureau of Nursing and representatives from the school community in order to evaluate the breakfast and lunch programs within the schools. As a result of recommendations made, healthy foods are now included in school menus and vending machines have been eliminated from schools.

School-Based Health Clinics. The Health Department, federally qualified

health centers and the Board of Education work together to promote health and well-being within the school setting. This

School Asthma Data By Grade – New Haven School District - 2008-2009

Asthma Prevalence By Severity	K - 8		Middle School		High School		Private & Parochial		All	
	N	%	N	%	N	%	N	%	N	%
Mild	701	5.5	77	9.9	167	3	41	5	986	5
Moderate	125	1.0	19	2.4	30	1	7	1	181	1
Severe	26	0.2	3	0.4	6	0	1	0	36	0
Exercise Induced	87	0.7	9	1.2	53	1	4	0	153	1
Unclassified	1132	8.9	42	5.4	668	13	62	7	1904	10
All Severity	2071	16.4	150	19.3	924	17	115	13	3260	17

Percentage of Asthmatics On Medications in School	K - 8		Middle School		High School		Private & Parochial		All	
	N	%	N	%	N	%	N	%	N	%
Inhaler as needed	1111	53.6	81	54.0	104	11.3	63	54.8	1359	41.7
Nebulizer as needed	51	2.5	1	0.7	5	0.5	2	1.7	59	1.8

meters, spacers and nebulizers to those students requiring them. School nurses also help to plan and participate in the

partnership provides an opportunity for effective interaction and communication between all partners regarding student health issues. As the **School Change** campaign progresses in 2010, the

PUBLIC HEALTH NURSING

nursing staff will continue to participate in the Board of Education’s “Wrap Around Services” (Coordinated School Health) Committee.

Our nurses are public health nurses—the frontline of defense against threats of bioterrorism. Planning for post- event clinics have been orchestrated and thirteen registered nurses and two doctors have been trained in the administration of smallpox vaccine. Our nursing staff participate in on-going education and training to respond to public health emergencies. With the H1N1 pandemic this year, the New Haven Health Department nurses administered vaccine at clinics throughout the New Haven community. The Bureau of Nursing is committed to educating the next generation of public health professionals. Through an affiliation agreement with both Southern Connecticut State University and the Yale School of Nursing, senior nursing students from both institutions take part in electives and mentorship programs.



PUBLIC HEALTH NURSING

Prevalence of Student Health Problems - New Haven Schools - 2008-2009

Health Problems	Grades K - 8		Middle School		High School		Private & Parochial		All	
	N	%	N	%	N	%	N	%	N	%
Allergy – bee	33	0.3	5	0.6	20	0.4	1	0.1	59	0.3
Allergy - latex	17	0.1	0	0.0	9	0.2	1	0.1	27	0.1
Allergy – tree nuts	62	0.5	7	0.9	12	0.2	16	1.8	97	0.5
Allergy - peanuts	122	1.0	16	2.1	33	0.6	15	1.7	186	0.9
Allergy - environment	223	1.8	23	3.0	109	2.0	23	2.6	378	1.9
Allergy - medication	164	1.3	32	4.1	112	2.1	19	2.1	327	1.7
Allergy - other food	248	2.0	27	3.5	108	2.0	27	3.0	410	2.1
Asthma	1993	15.8	150	19.3	908	17.0	124	13.9	3175	16.1
Respiratory (other)	28	0.2	0	0.0	9	0.2	2	0.2	39	0.2
Cardiac/Circulatory	98	0.8	4	0.5	58	1.1	5	0.6	165	0.8
Dental / Mouth	65	0.5	0	0.0	5	0.1	0	0.0	70	0.4
Diabetes - Type I	21	0.2	0	0.0	20	0.4	1	0.1	42	0.2
Diabetes - Type II	10	0.1	0	0.0	14	0.3	1	0.1	25	0.1
Cognitive deficits*	758	6.0	124	15.9	374	7.0	14	1.6	1270	6.5
Ear/Hearing	116	0.9	3	0.4	44	0.8	5	0.6	168	0.9
Endocrine/Nutritional	80	0.6	4	0.5	50	0.9	2	0.2	136	0.7
Eye / Vision	257	2.0	117	15.0	51	1.0	15	1.7	440	2.2
Gastrointestinal/GU	108	0.9	12	1.5	39	0.7	10	1.1	169	0.9
Hematologic/Oncologic	108	0.9	7	0.9	37	0.7	5	0.6	157	0.8
Musculoskeletal	114	0.9	0	0.0	63	1.2	9	1.0	186	0.9
Neurological **	214	1.7	25	3.2	99	1.9	5	0.6	343	1.7
Nose/Throat	17	0.1	0	0.0	20	0.4	3	0.3	40	0.2
Obstetric	2	0.0	0	0.0	56	1.0	0	0.0	58	0.3
Skin	201	1.6	13	1.7	60	1.1	11	1.2	285	1.4
Other	13	0.1	0	0.0	51	1.0	1	0.1	65	0.3
Total Health Problems	5129	40.5	570	73.2	2384	44.7	316	35.3	8399	42.7
Total students with at least one	3927	31.0	254	32.6	1696	31.8	256	28.6	6133	31.2

* ADD/ADHD, developmental delays

** Including headaches

PUBLIC HEALTH NURSING

Student Health Data – New Haven School District – 2008 - 2009

Medications taken at school under nurse supervision	Grades K to 8	Middle School	High School	Private & Parochial	Total
Asthma nebulizer, as needed	51	1	5	2	59
Asthma inhaler, as needed	1111	81	104	63	1359
Psychotropic drugs, daily	79	4	6	1	90
Diabetic insulin injection	3	0	0	1	4
Diabetic insulin pump	7	0	3	1	11
Other diabetic medication	24	0	7	3	34
Epi-Pen	173	13	29	26	241
Other daily medication	20	0	4	8	32
Other medication, as needed	216	18	33	18	285
Total medications	1684	117	191	123	2115

Special care performed by school nurse	Grades K to 8	Middle School	High School	Private & Parochial	Total
Ostomy tube feedings	2	0	0	0	2
NG tube	2	0	0	0	2
Suctioning	2	0	0	0	2
Glucose monitor	22	0	14	1	37
Catheter	2	0	1	0	3
Ostomy care	1	0	0	0	1
Other treatment	4	0	0	0	4

Vision Screening	Grades K - 8	Middle School	High School	Private & Parochial	Total
Screened by school nurse	4176	179	773	667	5795
Screened by ChildSight®	1824	601	0	0	2425
Total Screened	6000	780	773	667	8220

Hearing Screening	Grades K - 8	Middle School	High School	Private & Parochial	Total
Screened by Audiometrist	7952	273	60	741	9026

VITAL STATISTICS

The Department's Office of Vital

Statistics preserves and records all births, deaths, civil unions and marriages that occur in the City of New Haven or that occur outside of the City to New Haven residents. Adoptions, legal changes of name and amendments are also recorded. Resident copies are sent to the 169 cities and towns in Connecticut for those people who are not New Haven residents but had an event that occurred in New Haven.

Revenue from the Office is generated from the distribution of certified copies, permits and licenses to the public.

The Bureau has daily interaction with the public and a variety of federal, state and local agencies that require information pertaining to vital records. Original records dating from 1649 are stored and maintained in the Bureau's vault. Computerized storage of files began in 2003.

New Haven Vital Records - 2009

Records issued	Number	Total Charge
Marriage Licenses	1,079	\$32,370
Marriage Licenses Same Sex *	168	\$5,040
Certificate of Marriage	2,763	\$33,300
Civil Unions Licenses	3	\$60
Certificate Of Civil Unions	6	\$120
Certificate of Death	11,926	\$145,650
Certificate of Birth	20,101	\$234,770
Certificate of Births (Wallet)	5,407	\$35,275
Burial Permits	1,944	\$5,832
Cremation Permits	692	\$2,076
Disinterment Permits	9	\$27
Town Copies	3,562	\$7,124
Total	47660	\$501,644

Vital events	Number
Births	5,712
Deaths	1,869
Marriages	1,382
Civil Unions	2

Towards Health Equity: Envisioning a Healthy City



The New Haven Health Department has had a long history addressing the health inequities that plague our City. In viewing health beyond the scope of individual behaviors, we have come to understand that the health challenges we face as a City are directly connected to ethnicity, socio-economic status, stress and the environment, factors collectively known as the social determinants of health.

Day after day, the dedication and leadership of the New Haven Health Department front-line staff has been towards addressing the root causes of health inequity in New Haven. **The Health Equity Alliance (HEA)** funded by the CT Association of Directors of Health and the Kellogg Foundation is a vehicle that will strengthen the efforts of the Health Department while providing us with a deeper understanding of the connection between the social determinants of health through community partnerships and professional development.

A critical component of the HEA is the **Health Equity Index**, a tool for measuring the social determinants of health for a city or neighborhood (e.g., transportation, education, economic security) and examining their relationship to health outcomes. It will be used to help us gain a better understanding of New Haven's various health concerns.

Much of the New Haven Healthy Equity Alliance's (NH-HEA) 2009 work focused on building a solid foundation for action. Through an initial series of workshops, we have been strengthening our workforce base to articulate and apply principles that address the social



determinants of health. An initial pre-survey was sent to all of the Health Department staff in Fall 2009 to establish their understanding of health equity and was followed by workshops to address knowledge gaps. The feedback from these activities is being used to enhance community

Towards Health Equity: Envisioning a Healthy City

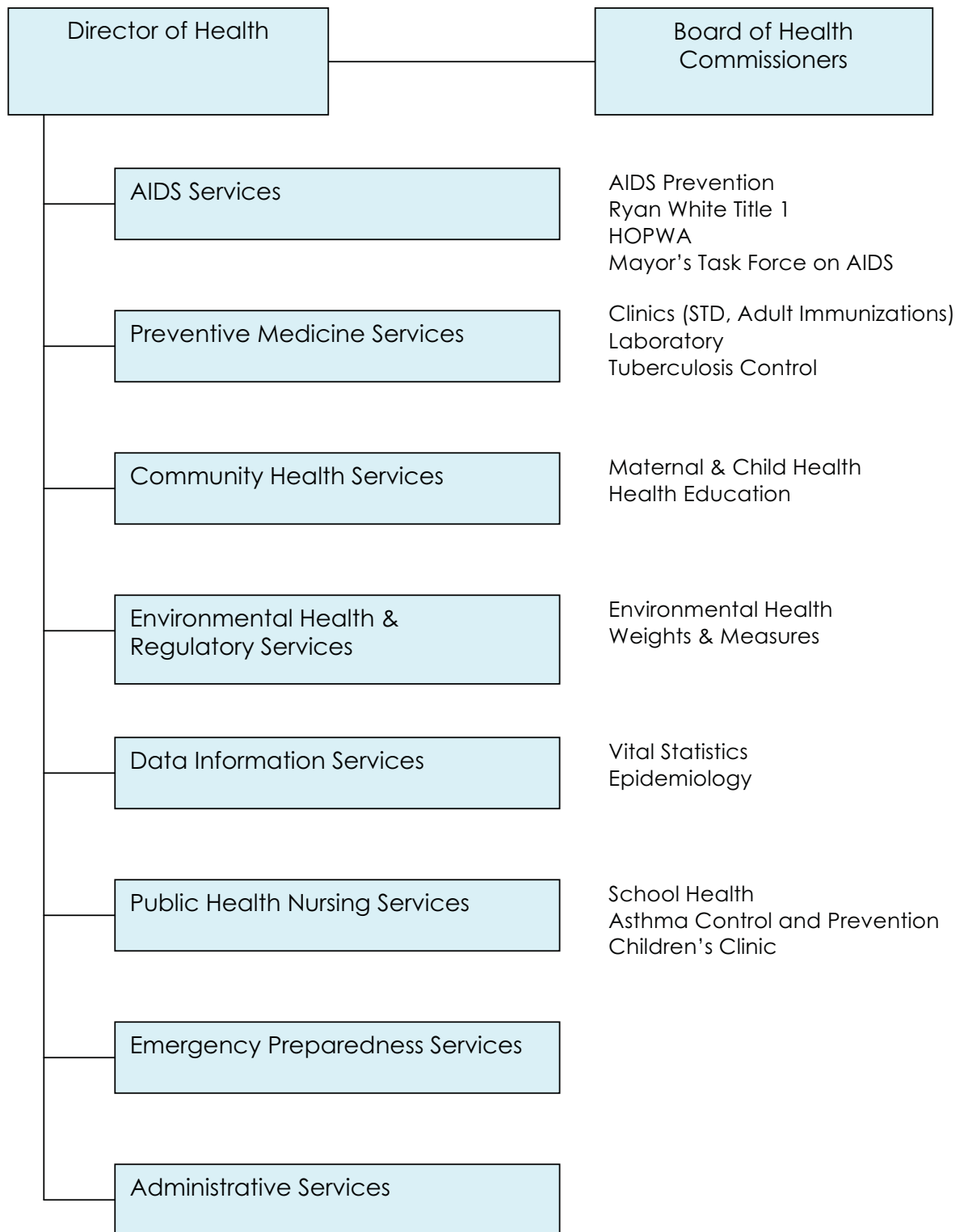
engagement around health equity and to develop materials for a professional development curriculum. In September 2009, NH-HEA held a kick-off event with community stakeholders to strengthen relationships and build collaborations to address health disparities. Since that time, NH-HEA has engaged organizations like DataHaven, CARE, and Community Mediation by making them an integral part of the planning process via various workgroups. Many of these partners have already gathered data and engaged with the New Haven community around various health-related topics. The data that have been collected will help NH-HEA identify key health priorities for 2010-2011.



Visions of a Healthier New Haven

The NHHD views NH-HEA as both a vehicle and an opportunity to address the root causes of the health concerns of our City and to ensure the longevity of these efforts. In the next fiscal year, NH-HEA will be partnering with the citywide initiative, *Health Matters!*, which will unify all efforts and address health inequities through policy change. NH-HEA will engage the community and City employees through the collection of stories, various art submissions, community dialogues and action plans focused on building a healthy city.

New Haven Health Department Organizational Chart - 2009



HEALTH DEPARTMENT DIVISIONS / BUREAUS

Administrative Services

Under the leadership of the Director of Health, Department staff monitor the health status of the community; investigate health problems; educate the public; collaborate; develop policies; enforce public health laws and regulations; perform evaluations, etc. In addition, the New Haven Health Department manages the New Haven Health Equity Alliance (NH-HEA), an initiative funded through the Connecticut Association of Directors of Health to address the social determinants of health and to promote health equity within the city of New Haven. New Haven is one of only three Connecticut cities to take part in this initiative.

AIDS

This Division provides confidential HIV testing, outreach programs, a needle exchange program, HIV/AIDS education and counseling, case management, services to individuals living with AIDS, as well as disease surveillance.

Environmental Health

The Bureau of Environmental Health addresses environmental health hazards that impact the health and well-being of New Haven residents. Bureau programs include lead hazard control, licensure and inspection of food service establishments, enforcement of state statutes and municipal ordinances, and public health emergency planning & preparedness. Staff conduct water testing, food service, home and child care inspections, investigate public health concerns & dangers.

Epidemiology

The Division of Epidemiology monitors, collects, analyzes and disseminates data that provide the New Haven Health Department with information for action; provides information to City of New Haven colleagues, clinicians and the public on disease and appropriate control measures; and, contributes to public health disaster preparedness (exercises, planning) and response.

Laboratory

The Laboratory section provides clinical and environmental services, including serological and microbiological tests, water quality analysis, distribution of vaccines and the disposal of biological and hazardous wastes.

Maternal and Child Health

This Division of the New Haven Health Department provides bicultural/bilingual community-based outreach and case management support for pregnant and parenting women and their families to successfully access health care and other support services. The Division is also responsible for the Department's Health Education Program which provides services aimed at reducing various risk factors for heart disease, cancer, stroke and unintentional injury.

HEALTH DEPARTMENT DIVISIONS / BUREAUS

Public Health Nursing

The Bureau of Nursing administers, supervises, and provides public health nursing and health support services. These include: School health services for public and non-public school-age children and youth; support services for various Health Department clinics and community health prevention services, and oversight of the New Haven Asthma Initiative, an outreach program designed to reduce the burden of disease from asthma.

Vital Statistics

The Office of Vital Statistics records all births, deaths, marriages, and adoptions; provides affidavits of parentage & legal changes of name occurring in New Haven; and, issues marriage licenses and permits for burial, disinterment & cremation.

Preventive Medicine

The goal of the Preventive Medicine Division is to trace disease patterns and their origins. The objective is to avoid morbidity and mortality in City residents by controlling and investigating communicable diseases known to threaten the public's health. Specific clinics are held to diagnose and treat diseases controllable by public health measures. The Department provides a central surveillance resource for information related to communicable diseases. Laboratory services are also provided and weekly clinics offer adult and child immunizations.

Weights and Measures

The Division of Weights and Measures safeguards the public health and promotes the public welfare by protecting consumers in all monetary transactions that use weights and measures. This includes gasoline, taxicabs, laundromats, and all purchases made in grocery stores within our jurisdiction.

Appendix A: New Haven Asthma Initiative

Greater New Haven Regional Asthma Initiative Coalition

The New Haven Health Department's Asthma Project Director chairs this diverse group of representatives from local health care agencies, regional health departments, Medicaid managed care organizations, the American Lung Association (ALA) and others to coordinate asthma-related activities. Educational outreach events and activities have included the World Asthma Day walk and celebration, coordination of visits by the American Lung Association's Breath Express learning bus to local schools, Asthma 101 trainings, use of the Open Airways curriculum, and collaboration with Connecticut Easy Breathing program representatives to promote Asthma Action Plans. The Coalition ensures a trained and competent asthma workforce in New Haven.

Triggers Be Gone Program

In cooperation with area health care providers, we are distributing a wide range of asthma tools, cleaning supplies and equipment to improve the home environment to families lacking either health insurance or insurance to cover these specific supplies. We have also partnered with Milford's Putting on Airs program and the Bureau of Environmental Health to conduct home inspections and in-home asthma education. We then follow up with recipients to determine, and track, if these supplies have demonstrated reductions in their use of emergency medical services and/or in missed school days. Both children and adults are eligible to receive these services.

Community Education Program

The Asthma Project Director performs extensive community educational outreach to agencies, schools and others concerning asthma, its causes, its environmental triggers and its treatment. In the past, outreach has been most successful at special events such as the annual NAACP Fair that attracts over 2,000 members of the New Haven community.

Early Intervention/Head Start

We currently have an official partnership agreement with the Head Start program. This allows us to reinforce asthma education messages and provide targeted programming for the parents of children with asthma in the Head Start program.

Putting on Airs Program

The Milford Health Department is the Putting on Airs representative for Asthma Region 1 which includes over 15 towns in the Greater New Haven area. This program delivers asthma education in the home. A nurse and a sanitarian go into the home and deliver asthma education and identify asthma triggers. We are a major referral source for the Putting on Airs program.

Asthma Urban Schools Program

A partnership between the Health Department and the Board of Education was created to better prepare and supply school nurses with the training, tools and skills to address asthma in the school setting. School nurses provide our annual asthma statistics and work closely with us to connect children with asthma with the appropriate resources.

Appendix A: New Haven Asthma Initiative

Outreach to Health Care Providers

Easy reference tools for providers have been developed of the various services and equipment covered by each of the several Medicaid managed care organizations. Contact has also been made concerning their ability to refer patients for home supplies, to promote the use of Asthma Action Plans and the availability of the Asthma Initiative Project Director to provide asthma education to local groups.

Coordination with Other Local and Regional Efforts

- Easy Breathing Project - a practice improvement project aimed at pediatric practices. This program increases the use of asthma action plans by medical providers.
- ERICCA Project – a collaboration with Yale University to develop better electronic communications between providers in the care of asthma. The Triggers Be Gone referral form is a part of Yale's Electronic Medical Record.

Appendix B:

Maternal & Child Health Programs

Connecticut Healthy Start, HUSKY Insurance Application Assistance

A CT Department of Social Services funded program that assists pregnant women and their families applying for health insurance. Clients receive short-term, limited care coordination, a comprehensive risk assessment, referrals and follow-up. The New Haven Health Department is the South Central Connecticut Regional HUSKY administrator.

Connecticut Healthy Start, Maternal and Newborn Outreach Support (MANOS) Program

A CT Department of Social Services funded intensive case-management and home visiting program for pregnant women who are identified for being at risk for a poor birth outcome. Services include family re-unification, medical transportation, advocacy, referrals for employment, training and housing, behavioral health and substance abuse treatment.

Nurturing Families Network (NFN)

A Connecticut Children's Trust Fund, Department of Social Services funded program designed to promote positive parenting and reduce incidences of child maltreatment for high risk, first time parents. Components of the program include a focus on fathers, (among the first in the nation), support groups, (teen and co-ed), and weekly home visiting.

Pediatric Immunizations- Connecticut Immunization Registry and Tracking System (CIRTS)

A CT Department of Public Health funded program that tracks immunization compliance and provides outreach and case finding for children up to 24 months of age.

New Haven Healthy Start

A Federally-funded program administered by the Community Foundation for Greater New Haven to improve birth outcomes and reduce health inequities for African American women. Healthy Start begins with preconception counseling and includes prenatal, postpartum and infant care and targeted support services that address identified needs.

New Haven Board of Health

John DeStefano, Jr., (Ex-Officio)
Mayor, City of New Haven

Chisara N. Asomugha, MD, MSPH, FAAP*
New Haven Health Department

Katrina Clark, MPH**
Fair Haven Community Health Center

Reid Davis, RPh, MPH

Jonathan A. Dranoff, MD
Gastroenterologist

Fred Gager, MD*
New Haven Health Department

Tamiko Jackson-McArthur, MD
Pediatrician

Frank Mongillo, III, MD
Internist

Heather Reynolds, CNM, MSN
Yale School of Nursing

Hector Rivera, Jr., MD
Yale-New Haven Hospital

New Haven Health Department Executive Staff

Administrative Services

Lucy dos Santos
Fiscal Administrative Assistant

Michele Greengarden, MPH
Special Assistant to the Director of Health

HIV/AIDS

Matthew Lopes, MPH
Director

Thomas Butcher, MEd
Project Director, Ryan White Title I

Preventive Medicine

Fred Gager, MD
Medical Advisor

Lewis Madley, MS
Director, Laboratory

Environmental Health

Paul Kowalski, MPH, RS
Director

Kristen Bayer, MALS
Sealer, Weights and Measures

Emergency Preparedness

Leonard Nelson, Jr., MCJ, RS
Emergency Response Assistant

Community Health

Maria Damiani, MS
Director, Maternal and Child Health

Kathleen Hagearty, LCSW
Project Coordinator, Nurturing Families Network

Jennifer Hall
Pediatric Immunization Coordinator

LaRonda Winfrey-Osimeh
Field Supervisor, MANOS Program

MaryAnn Zavorskas, MS, CHES
Health Education Assistant

Data Information Services

Renee Coppola
City Registrar of Vital Statistics

Marie DeGaetano
Deputy City Registrar of Vital Statistics

Amanda Durante, PhD, MSc
Epidemiologist

Public Health Nursing

Kathryn Carbone, RN, MS, NCSN
Director

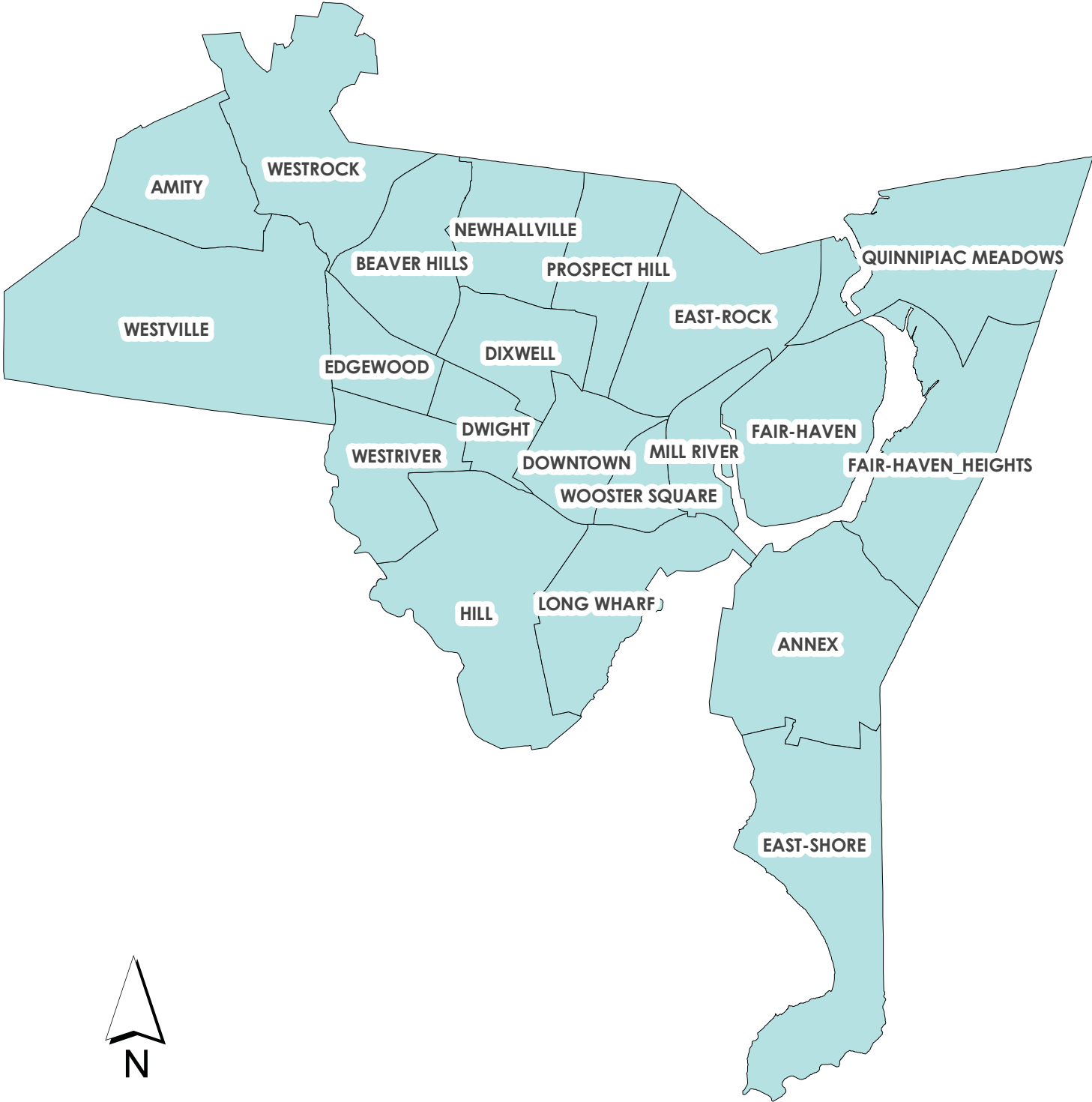
Ashika Severin-Brinkley, MPH
Project Director, Asthma Program/Triggers Be Gone

Health Equity Alliance

Shanta Evans, MBA
Coordinator

* Non-voting Members
**Term Expired

CITY OF NEW HAVEN BY NEIGHBORHOOD



Annual Report 2009

Produced by:

The New Haven Health Department
Chisara N. Asomugha, MD, MSPH, FAAP
(Acting) Director of Health

Editorial Staff:

Michele Greengarden, MPH
Amanda Durante, PhD
Lynn Lyons, MS, CH

Contributors and Photographs:

New Haven Health Department Staff



**New Haven Health Department
54 Meadow Street, 9th Floor
New Haven, CT 06519
(203) 946-6999
www.cityofnewhaven.com/health**