

FAMILY DISASTER PLAN

FIND OUT WHAT COULD HAPPEN TO YOU

- Contact your local Emergency Management Office before a disaster occurs -- be prepared to take notes.
- Ask what types of disasters are most likely to happen. Request information on how to prepare for each.
- Find out how to help the elderly and disabled, if needed.
- Find out about the disaster plans at your workplace, your children's school or day care center, and other places where your family spends time.



CREATE A DISASTER PLAN

- Meet with your family and discuss why you need to prepare for disaster. Explain the dangers of fire, severe weather, and earthquakes to children. Plan to share responsibilities and work together as a team.
- Discuss the types of disasters that are most likely to happen. Explain what to do in each case.
- Pick two places to meet:
 - Right outside your home in case of a sudden emergency, like a fire.
 - Outside your neighborhood in case you can't return home. Everyone must know the address and phone number.
- Ask an out-of-state friend to be your "family contact." After a disaster, it's often easier to call long distance. Other family members should call this person and tell them where they are. Everyone must know your contact's phone number.
 - Discuss what to do in an evacuation. Plan how to take care of your pets.



COMPLETE THIS CHECKLIST

- Post emergency telephone numbers by all phones (fire, police, ambulance, etc.).
- Teach children how and when to call 9-1-1 or your local Emergency Medical Services number for emergency help.
- Show each family member how and when to turn off the utilities (water, gas, and electricity) at the main switches.
- Check if you have adequate insurance coverage.

- Get training from the fire department for each family member on how to use the fire extinguisher (ABC type), and show them where it's kept.
- Install smoke detectors on each level of your home, especially near bedrooms.
- Conduct a home hazard hunt.
- Stock emergency supplies and assemble a Disaster Supply Kit.
- Take a first aid and CPR class.
- Determine the best escape routes from your home. Find two ways out of each room.
- Find the safe places in your home for each type of disaster.

PRACTICE AND MAINTAIN YOUR PLAN

- Quiz your kids every six months or so.
- Conduct fire and emergency evacuations.
- Replace stored water and stored food every six months.
- Test and recharge your fire extinguisher(s) according to manufacturer's instructions.
- Test your smoke detectors monthly and change the batteries at least once a year.

NEIGHBORS HELPING NEIGHBORS

Working with neighbors can save lives and property. Meet with your neighbors to plan how the neighborhood could work together after a disaster until help arrives.



If you're a member of a neighborhood organization, such as a crime watch group, introduce disaster preparedness as a new activity. Know your neighbors' special skills (e.g., medical, technical) and consider how you could help neighbors who have special needs, such as disabled and elderly persons. Make plans for child care in case parents can't get home.

IF DISASTER STRIKES

Remain calm and patient. Put your plan into action.

Check for Injuries. Give first aid and get help for seriously injured people.

Listen to Your Battery-Powered Radio for News and Instructions

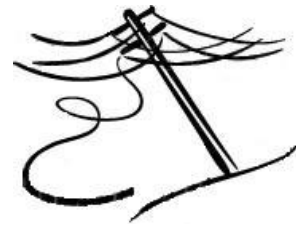
Check for Damage in Your Home.

- Use flashlights. Do not light matches or turn on electrical switches, if you suspect damage.

- Sniff for gas leaks, starting at the water heater. If you smell gas or suspect a leak, turn off the main gas valve, open windows, and get everyone outside quickly.
- Shut off any other damaged utilities. (You will need a professional to turn gas back on.)
- Clean up spilled medicines, bleaches, gasoline, and other flammable liquids immediately.

REMEMBER TO:

- Confine or secure your pets.
- Call your family contact - do not use the telephone again unless it is a life-threatening emergency.
- Check on your neighbors, especially the elderly or disabled persons.
- Make sure you have an adequate water supply in case normal service is cut off.
- Stay away from downed power lines.



For more information, please contact the City of New Haven Office of Emergency Management , 200 Orange Street, New Haven, CT 06510 203.946.8224 or jmoore@newhavenct.net